



How Smart are Buildings?

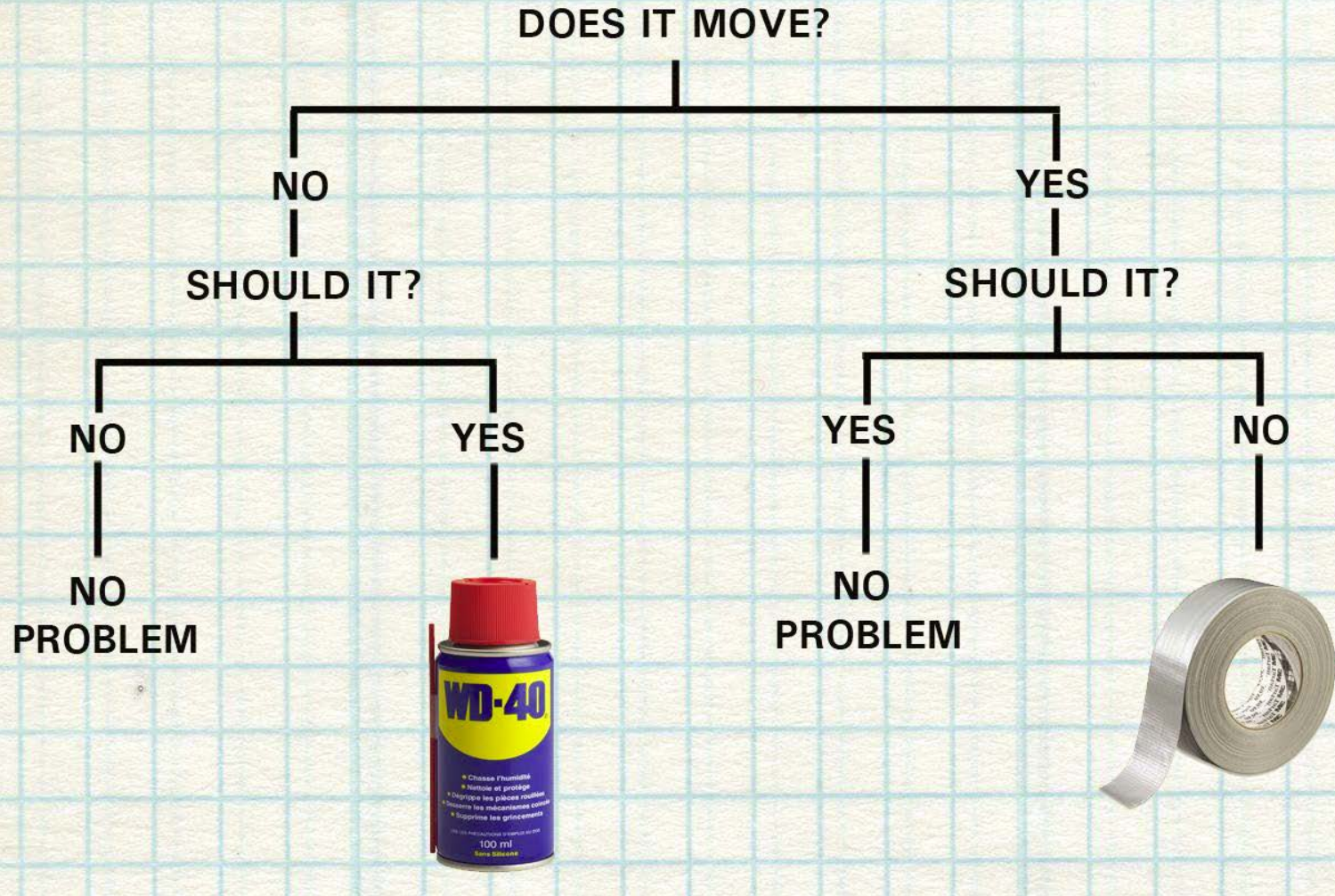
Software Solutions for Improving the Bottom Line

Speakers:

- Joshua Clyburn, NYSERDA
- Dom Lempereur, KW Engineering
- Paul Reale, CUNY Building Performance Lab
- David Sungarian, Steven Winter Associates (Moderator)



ENGINEERING FLOWCHART



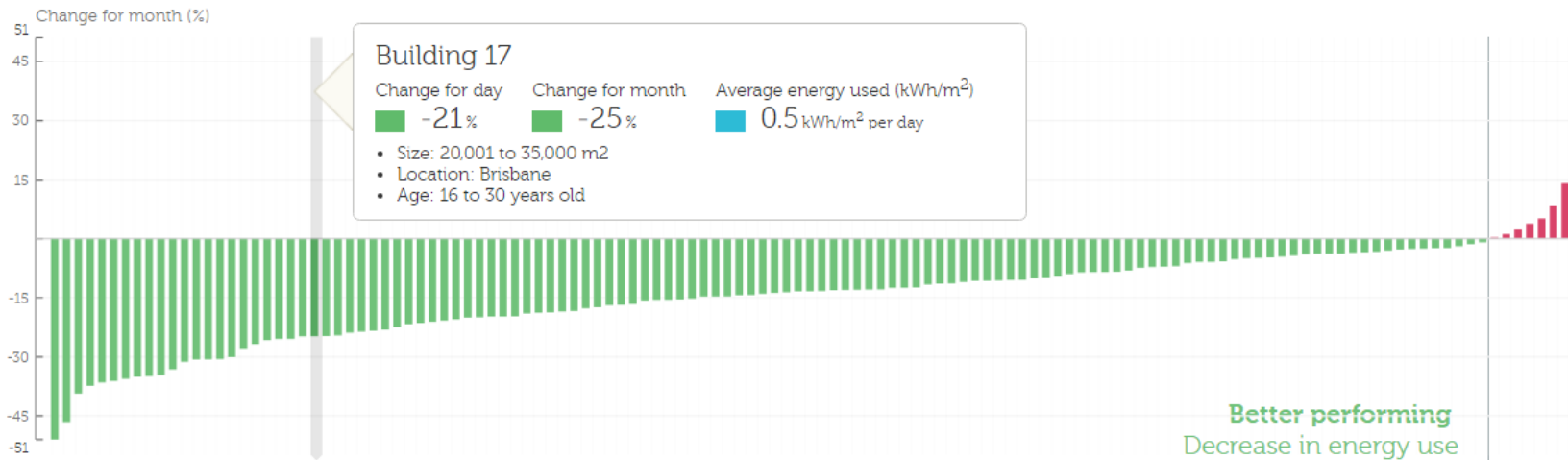


High Level Analysis Tools

BuildingsAlive

HOME RESULTS INSIGHTS ABOUT CONTACT

Explore how real buildings in the Buildings Alive program performed yesterday.

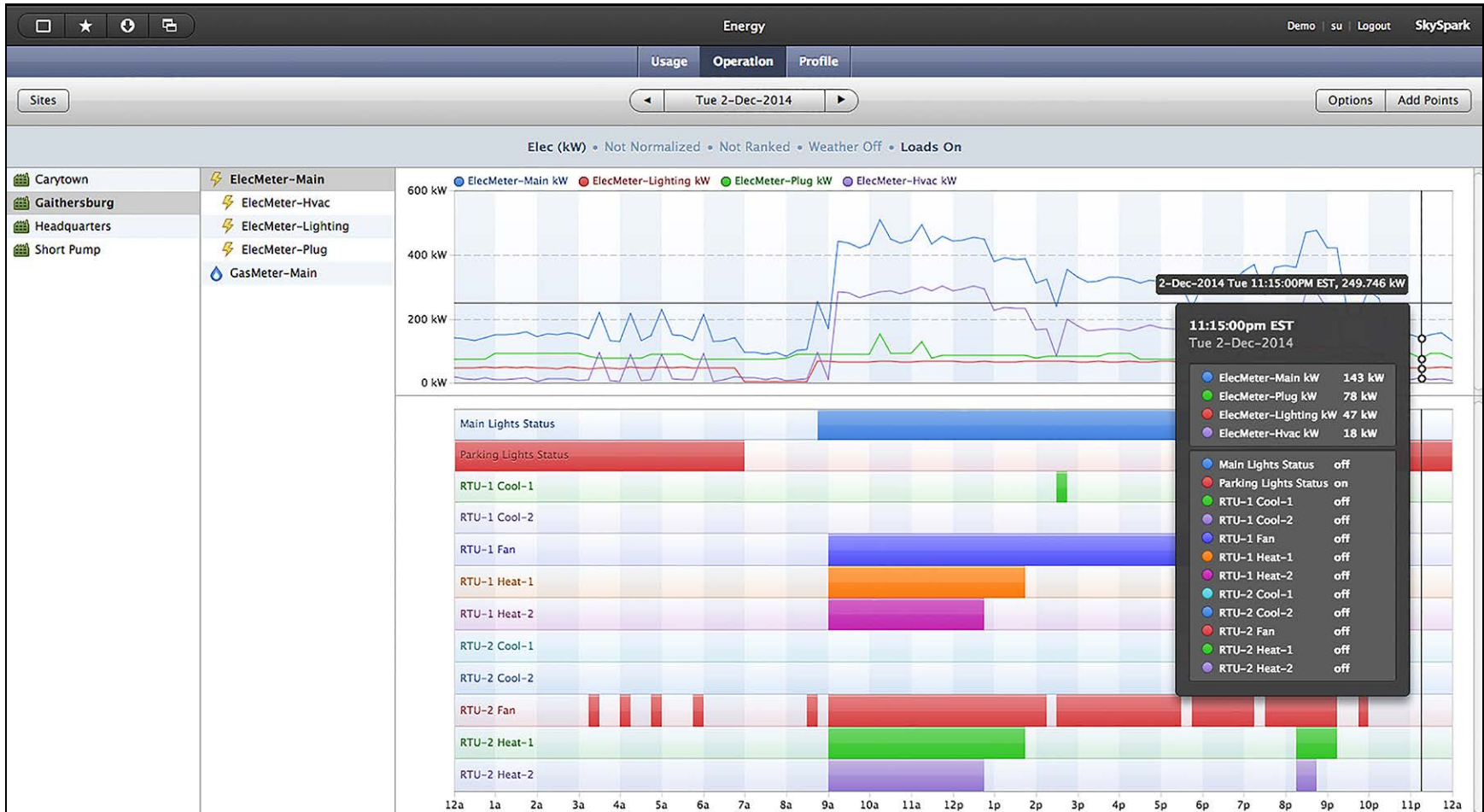


www.buildingsalive.com

Steven Winter Associates, Inc.

NEW YORK, NY | WASHINGTON, DC | NORWALK, CT

Low Level Analysis Tools



www.skyfoundry.com/skyspark



Why Now?

1. Lower cost sensors & network devices
2. Advancement of IoT technology
3. Increased web interconnectivity and availability of outside data sources:
"Age of Data"
4. Increased demand for energy savings

NYC's 80x50 Initiatives



Strategy Matrix

		Energy	Buildings	Transportation	Waste
Buildings	Implement cost-effective upgrades in existing buildings to improve energy efficiency in the near-term		●		
	Scale up deep energy retrofits that holistically address heating systems, cooling systems, and building envelopes and transition buildings away from fossil fuels	●	●		
	Expand distributed solar energy and install 1,000 MW of solar capacity by 2030	●	●		●
	Ensure building decision-makers have access to building energy use information		●		
	Provide assistance to the private sector to accelerate adoption of energy efficiency and clean energy	●	●		
	Streamline regulatory processes for building energy efficiency and clean energy	●	●		
	Ensure building owners can finance energy efficiency projects	●	●		
	Achieve exceptional energy performance for new buildings and substantial renovations		●		
	Lead by example in City-owned buildings	●	●	●	●
	Prepare New York City's workforce to deliver high performance buildings		●		
	Position New York City as a global hub for energy efficiency and clean energy technology	●	●	●	●

"Roadmap to 80x50" Report