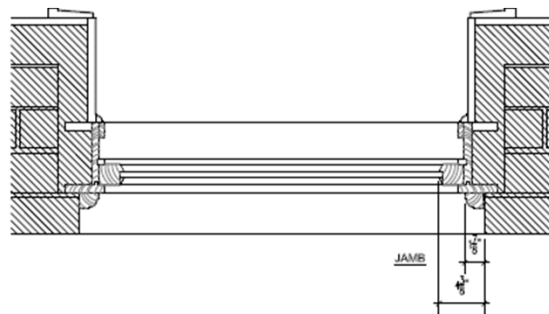
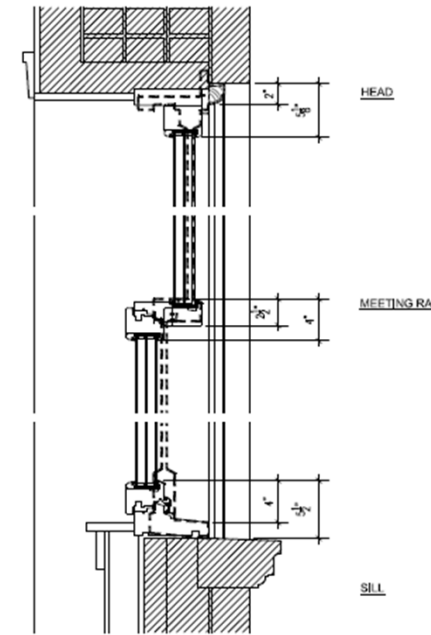
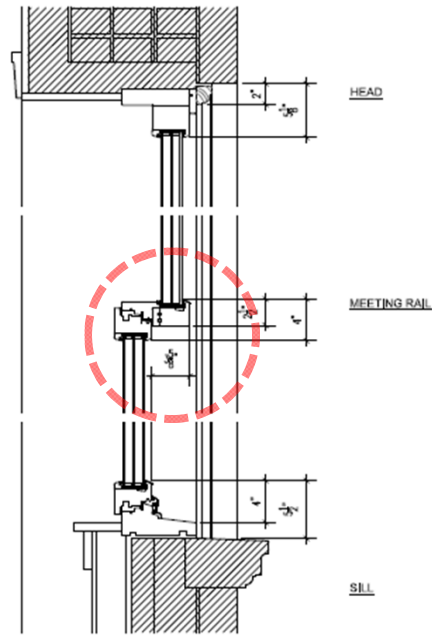
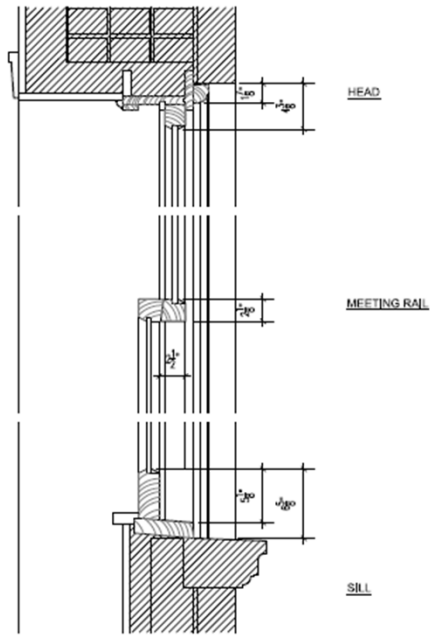
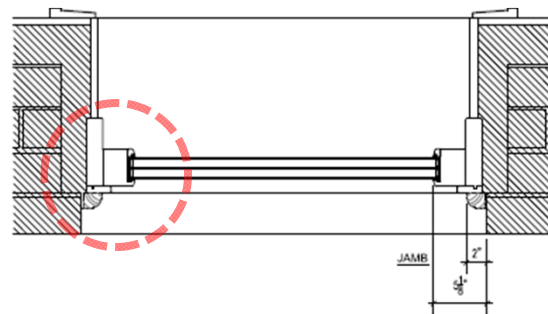


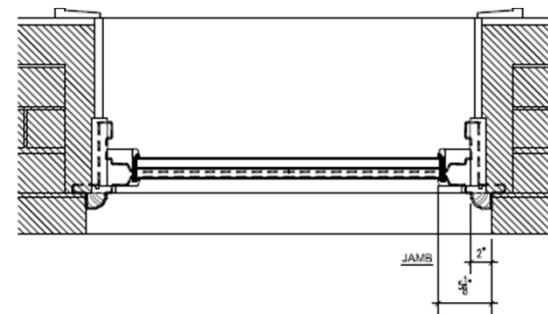
Simulated Double-Hung Windows- Details



FACADE WINDOW DETAILS- EXISTING

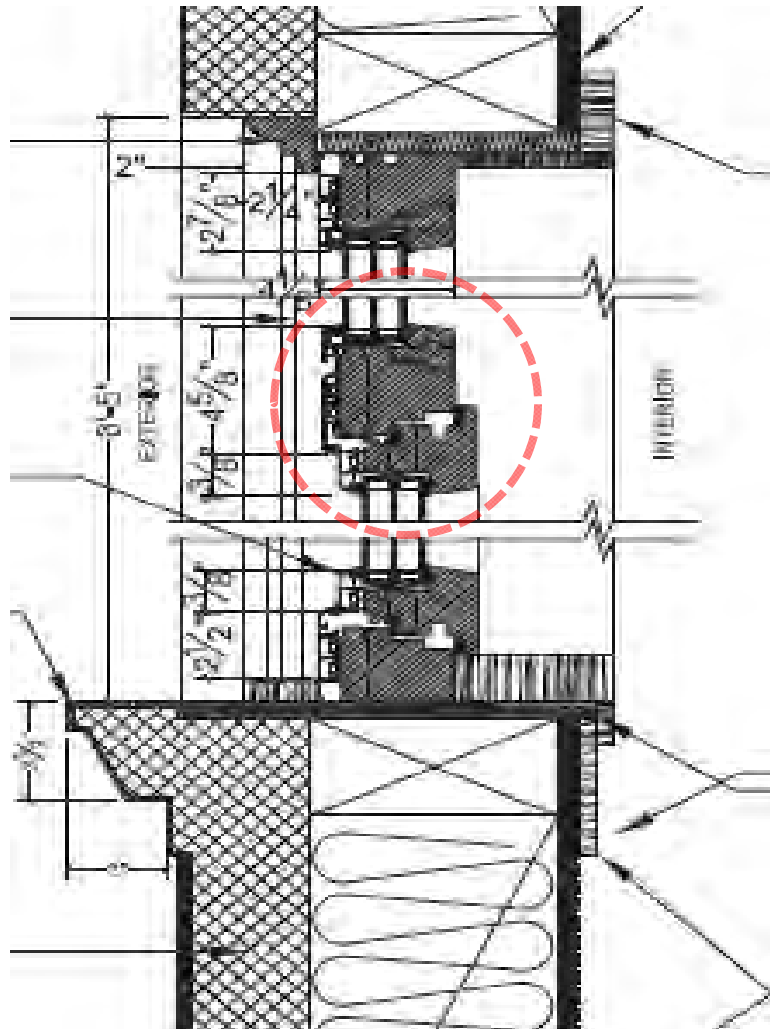


FACADE WINDOW DETAILS- PROPOSED

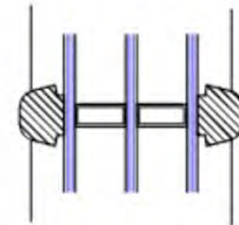
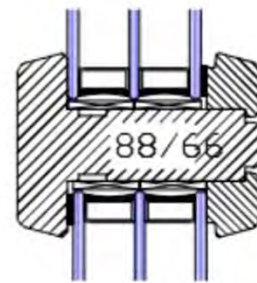
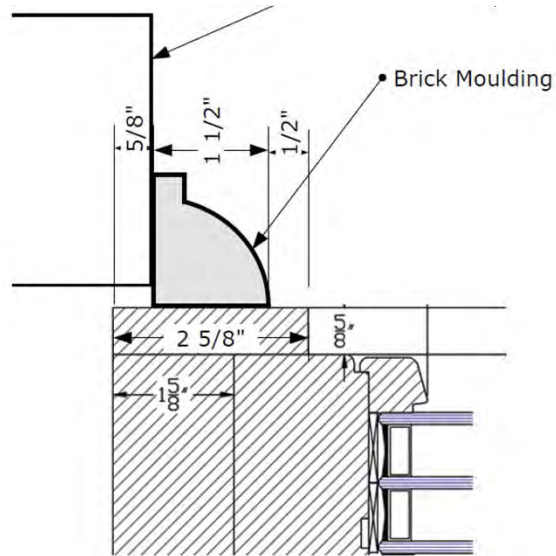
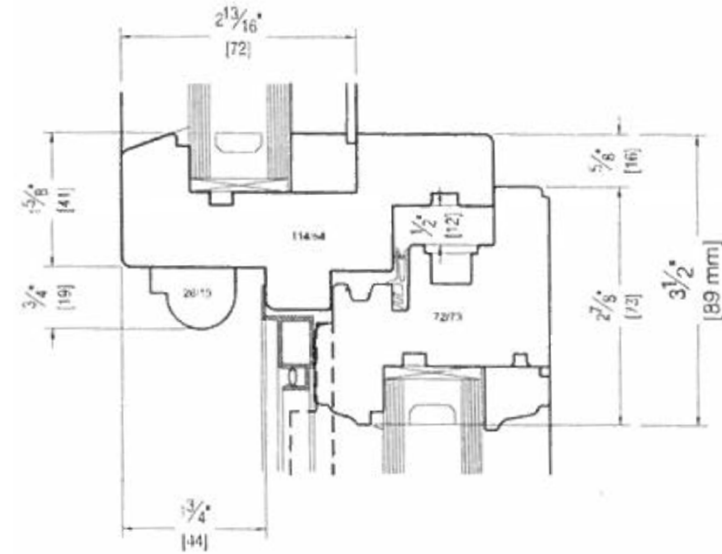
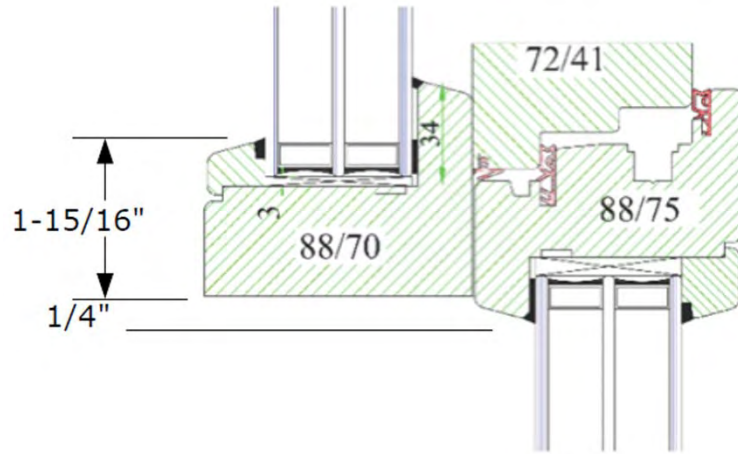


FACADE WINDOW DETAILS- OVERLAY OF EXISTING OVER PROPOSED

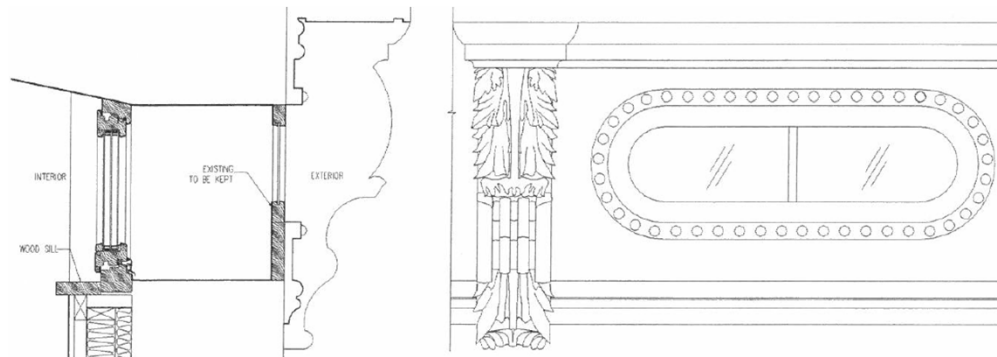
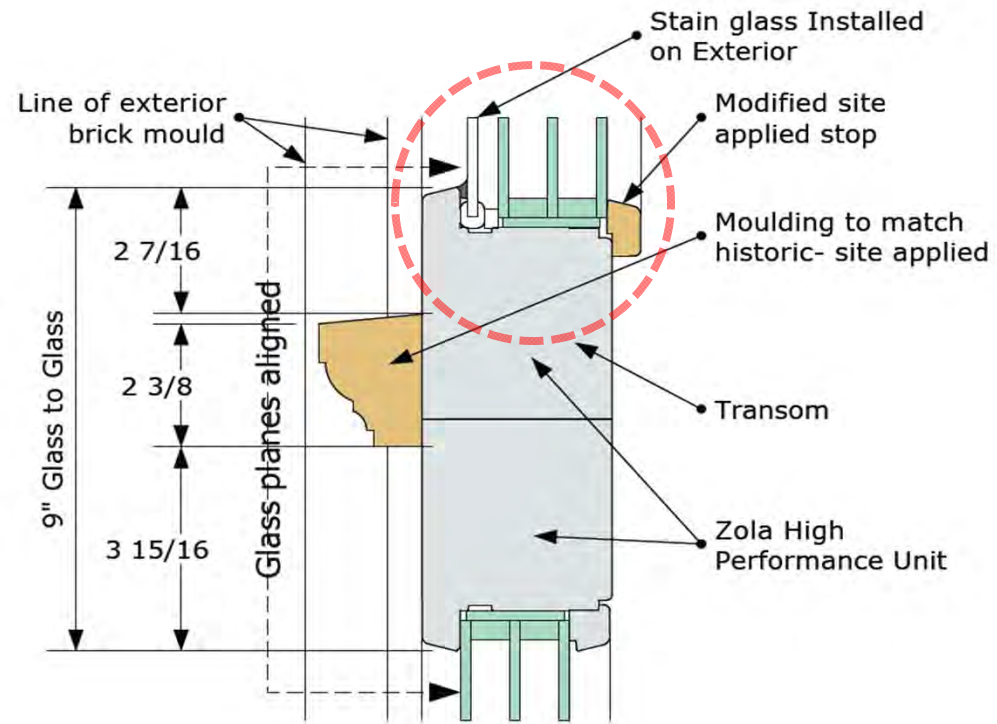
Simulated Double-Hung Windows- Details



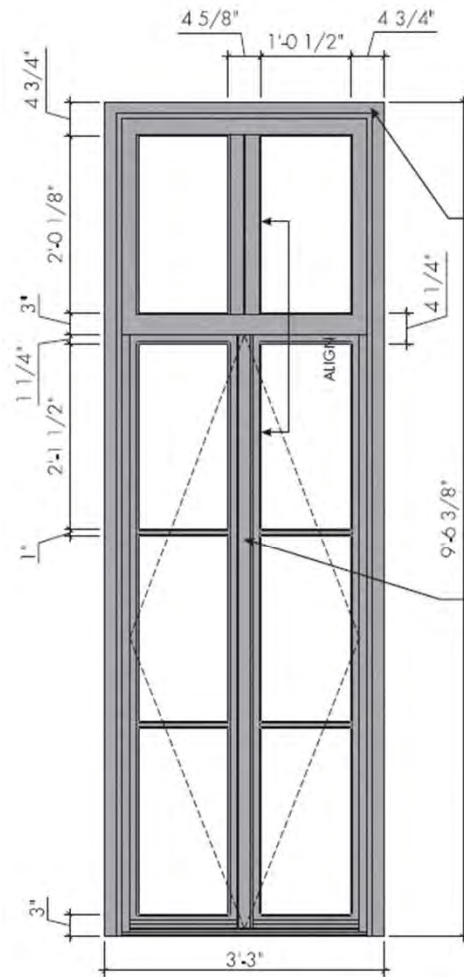
Simulated Double-Hung Windows- Details



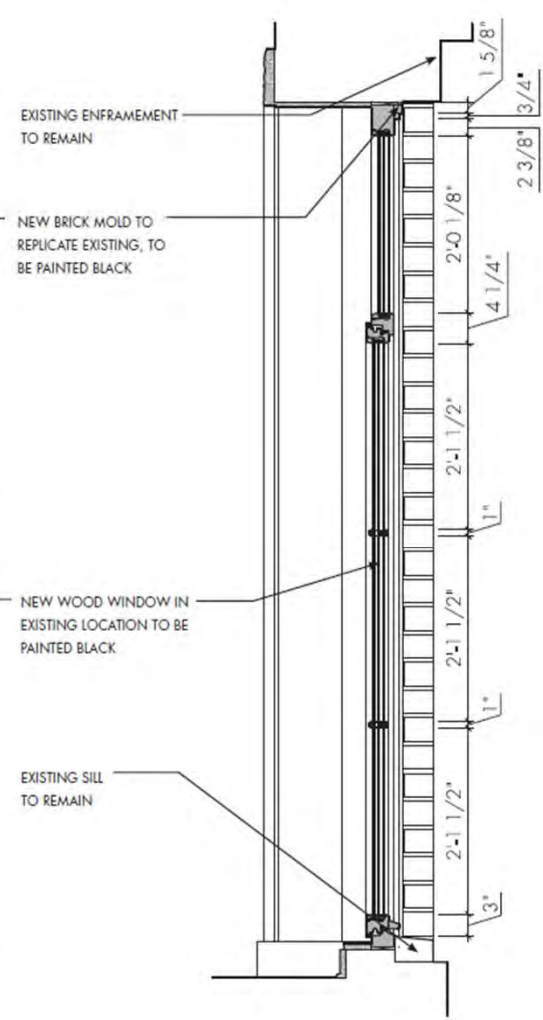
Simulated Double-Hung Windows- Special Conditions



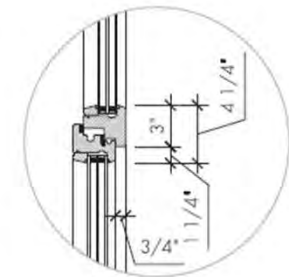
Simulated Double-Hung Windows- Special Conditions



FRONT ELEVATION
 French Casement Windows w/ Transom
 Manuf.: Bildau & Bussman



VERTICAL SECTION



DETAIL BLOW-UP

What's Next?

- Staff level approval of ERV/HRV installations with through-wall and rooftop components.
- Staff level approval of simulated double-hung windows for buildings in historic districts undertaking deep energy retrofits?
- Modest increase in allowable visibility of rooftop mechanical equipment including solar and other renewable energy or high efficiency equipment??
- Commission level approval of exterior insulation?? (likely limited to non-visible rear facades lacking architectural features and not part of a substantially intact row).
- You tell us! **LPC will consider whatever you bring us next.**

LPC Contact Information

The screenshot displays the NYC Landmarks Preservation Commission website. At the top, there is a navigation bar with the NYC logo, the text 'Landmarks Preservation Commission', and a search bar. Below this is a secondary navigation menu with links for 'About', 'Designations', 'Applications', 'Hearings', 'Violations', and 'Discover'. The main content area features a large map titled 'Discover NYC Landmarks' with a sidebar containing 'IN THIS STORY' and a list of 'Upcoming Public Hearings'. The sidebar also includes a 'Landmark Search' section with a 'Street Address' input field and a 'Select Borough' dropdown menu. At the bottom of the page, there is a 'Quick Links' section with various utility links.

NYC Landmarks Preservation Commission 311 Search all NYC.gov websites

Landmarks Preservation Commission

Italiano Translate Text-Size

About Designations Applications Hearings Violations Discover Search

Discover NYC Landmarks

IN THIS STORY

LPC launched Discover NYC Landmarks, an interactive map that allows you to easily search, navigate, and explore designated landmarks in your neighborhood and throughout the five boroughs.

Discover NYC Landmarks

Landmark Search

Street Address

Select Borough

GO

Discover NYC Landmarks

GO

Upcoming Public Hearings

October 25, 2016
Public Hearing/Meeting
Materials Available
October 21, 2016

November 1, 2016
Public Hearing
Materials Available
October 28, 2016

November 15, 2016
Public Hearing
Materials Available
November 10, 2016

View Hearing Calendar and Actions

Quick Links

Forms

Search for Permit Applications

Permit Application Guide

Correct a Violation

View Public Hearing Presentations

Watch LPC Hearings

Search Public Hearing Decisions

Meenakshi Srinivasan, Chair

1 Centre Street
9th Floor North
New York, NY 10007
212-669-7700

Public Information Line: 212-669-7817
info@lpc.nyc.gov

Applications Help Desk
applications@lpc.nyc.gov

Cory S. Herralá
Director of Technical Affairs, Sustainability and Resiliency
212-669-3411
cherralá@lpc.nyc.gov

www.nyc.gov/landmarks