



How Builders and General Contractors can leverage off-site construction to grow their business with less effort with Unity Homes

NESEA| Energy Boston 2024



Bensonwood

unity
homes

TEKTONIKS
ADVANCED BUILDING COMPONENTS

OPENHOME



unity
homes

est. 2012

High Performance Off-site Panelized Construction











Production Facility, Keene NH



Where we work



How We Work



DESIGN



ENGINEERING



PERMIT PLANS

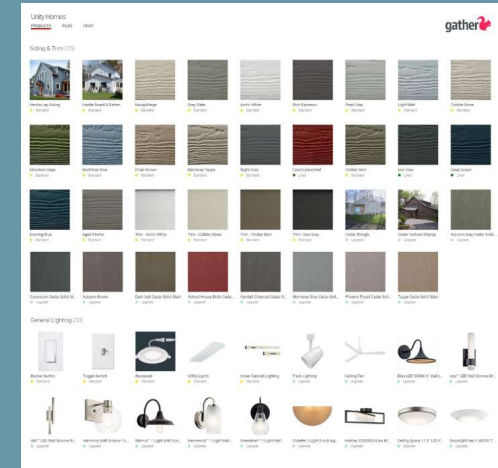


CONSTRUCTION
DOCUMENTS

Installation of the "Shell Package"



Supply Finishes



Builder Testimonials



Advantages

- We bring clients to you
- Our crew installs the shell, less labor needed
- Vetted high performance building shell with quality control processes
- Time savings- weather tight in one week, not months
- 40% of the project is produced offsite means faster timeline, more projects per year
- Less time estimating, clear division of scope



The Partnership

Unity Homes

- Unity provides the design and all permit and construction documents
 - + Professional Stamps as needed
- Unity sources and coordinates delivery of finishes (Tempo package) *optional*
- Unity Provides scope documents
- Unity Provides manual J and recommended HVAC equipment
- Project Management support
- Delivery and installation of the Shell package, with QC blower

Builder Partner

- Early involvement with input on the site
- Input on finishes supplied by Unity or Builder may supply finishes
- Installation of foundation per Unity drawings
- Coordinate subcontractors
- Install finishes

Designs



- Ready to build plans from our website
- Streamlined design system derived plans allow you to mix and match components
- High level of personalization/tailoring/options
- Low design costs



UNITY'S HIGH PERFORMANCE SHELL

[A] Exterior Siding

Siding varies. Fiber cement siding is the standard siding option and cedar siding is an upgrade option within the Unity Tempo package. If provided by a local builder, siding can vary.

[B] Rainscreen Detail

Built-in air space behind siding for drainage and drying. Typically provided by local builder.

[C] Exterior Sheathing

ZIP sheathing with built-in weather resistant barrier and high-performance tape on all seams.

[D] Structural Framing and Insulation Assembly

Dense-packed cellulose insulation; 9½" deep I-Joist framing at 24" on center for the wall (R35) and 14½" deep I-Joist framing for the roof (R50) when roof panels are applicable to the design (alternate framing: roof trusses with R60 insulation).

[E] Interior Sheathing

7/16" oriented strand board (OSB) structural sheathing on the interior of the wall and roof panels with air-sealing tape on seams provides air and vapor control layer.

[F] Service Layer

2 x 3 framing at 24" on center creates a 2½" deep service layer for electrical and plumbing runs. 5/8" drywall supplied and installed by the local builder.

[G] Exterior Windows and Doors

Exterior doors and triple pane European-style tilt-turn windows. Installed (mid-mount), sealed and flashed in the panel factory.

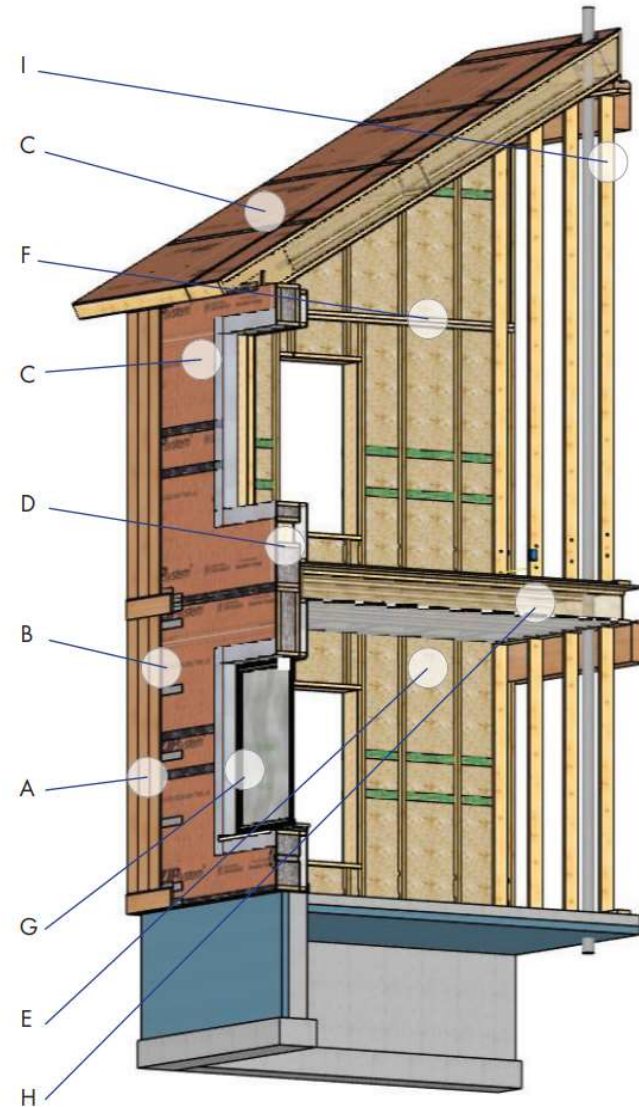
[H] Interior Floor Systems

11 7/8" I-joists at 24" on center with 7/8" Advantech subfloor; timber support structures as required.

[I] Interior Partition Walls

2 x 4 and 2 x 6 framing, as needed, 24" on center, predrilled for wiring (5/8" drywall by local builder)

Note: This example 3D rendering shows the basic details of our panelized system. The details of specific projects may vary, based on the design platform.





Thank You

unity
 homes