

BUILDINGENERGY BOSTON

Beyond the Building: Climate Justice and the Solidarity Economy

Declan Keefe, CoEverything

Curated by Brendan Kavanagh and Katherine Straus

Northeast Sustainable Energy Association (NESEA) | March 20, 2025

BEYOND THE BUILDING

CLIMATE JUSTICE AND THE SOLIDARITY ECONOMY

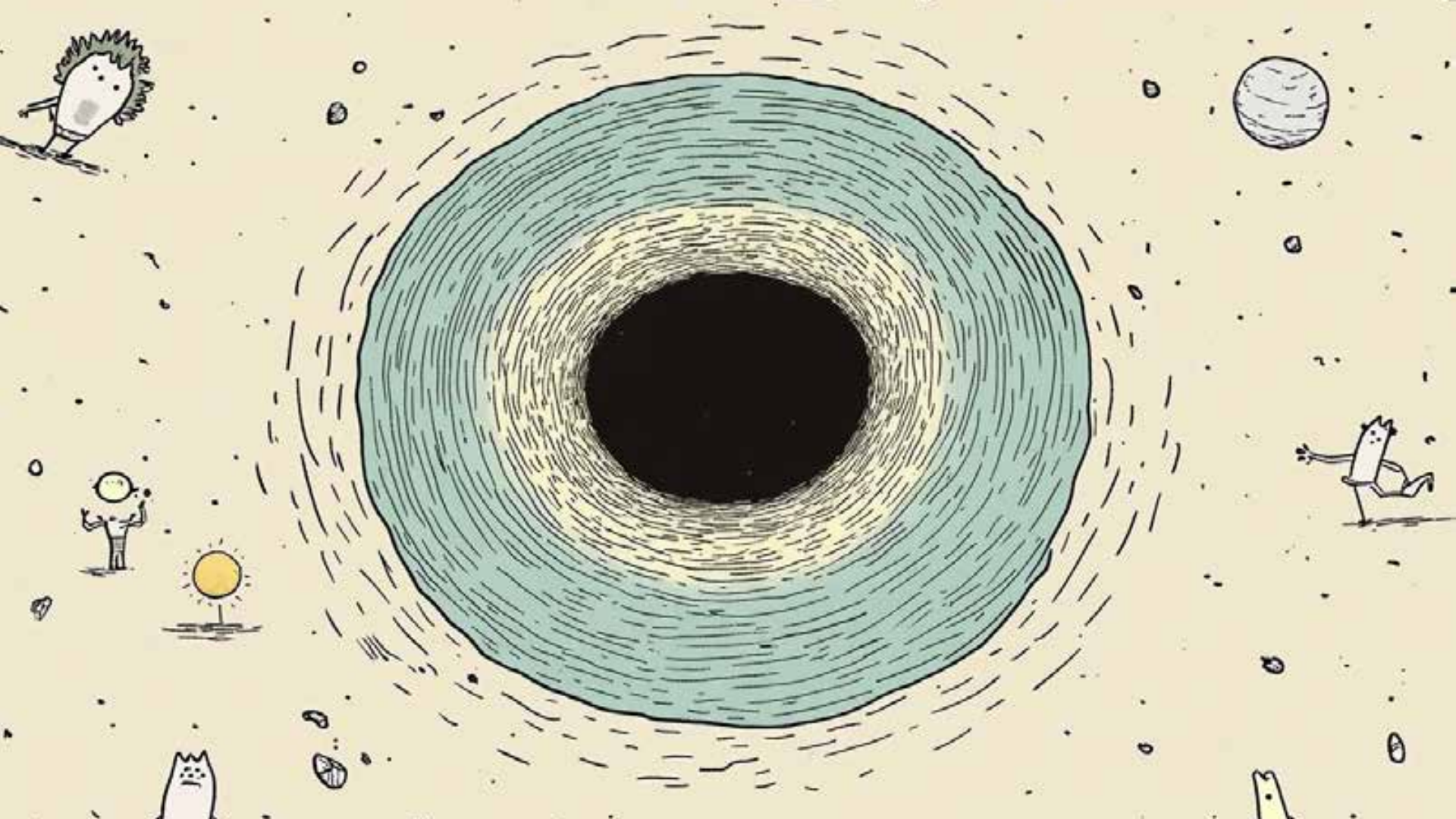


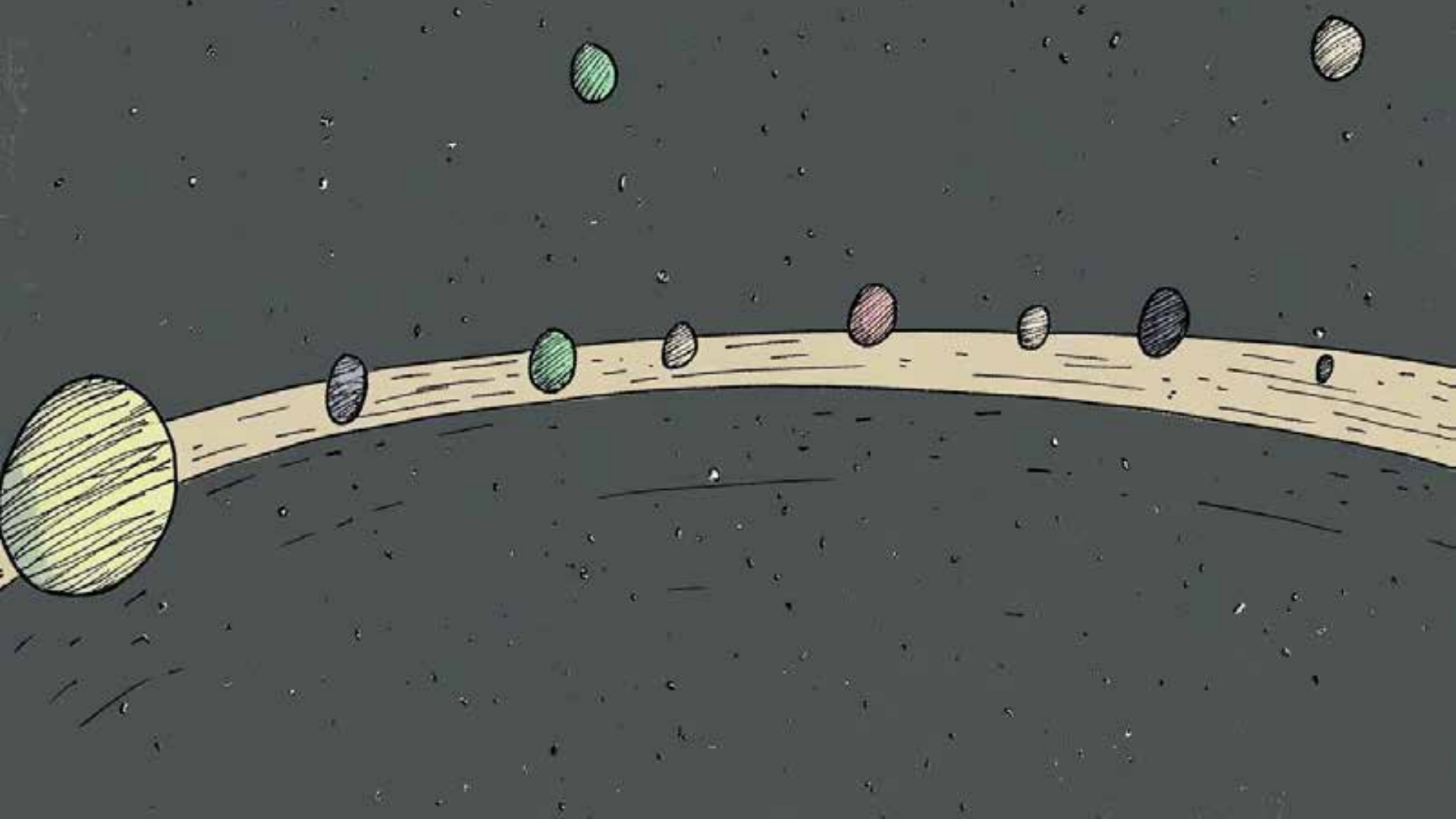
A STORY BY: DECLAN KEEFE



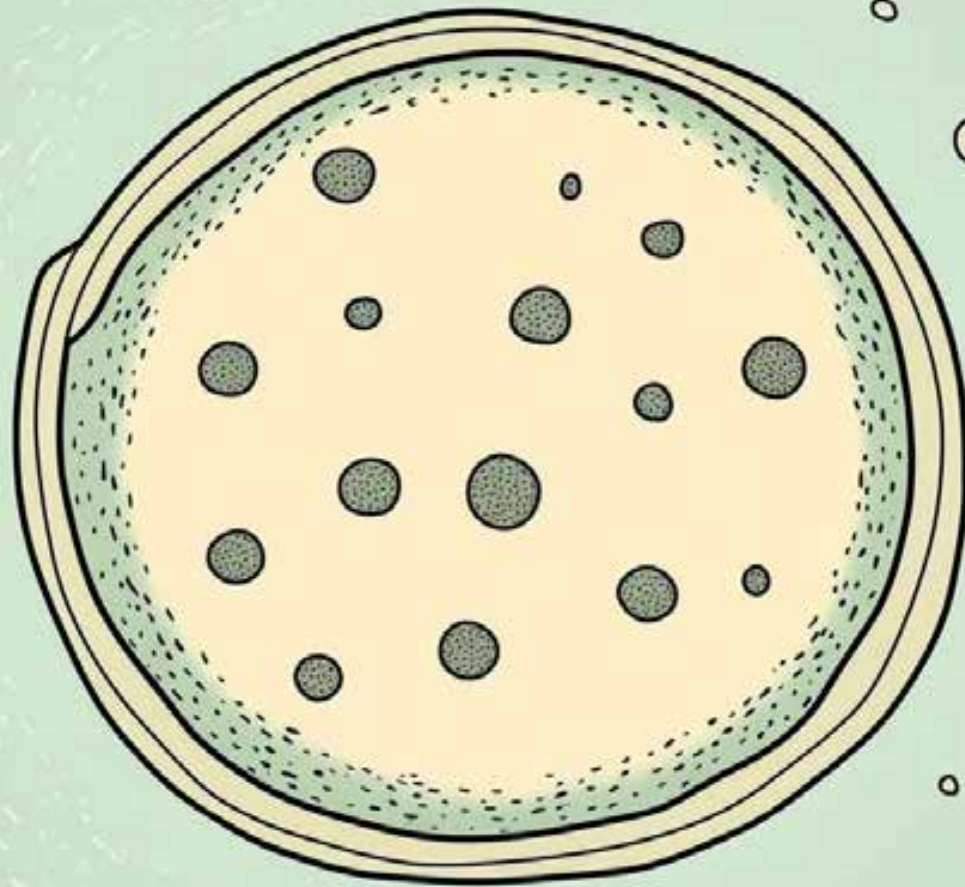
HOW SHOULD WE DO IT?

"TOGETHER"









SINGLE CELLED ORGANISM

4.3
BILLION
YEARS
AGO



4,000,000,000

YEARS LATER...



SYNAPSIDS

THE EARLIEST ANCESTORS

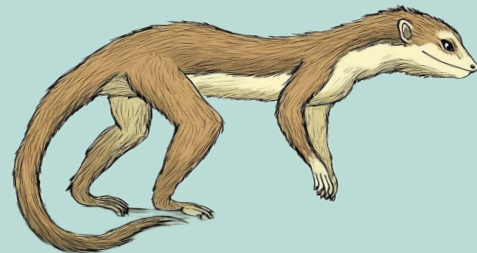
~320-250 MILLION YEARS AGO



EARLY MAMMALIAFORMS

THE FIRST TRUE MAMMAL ANCESTORS

~205-150 MILLION YEARS AGO

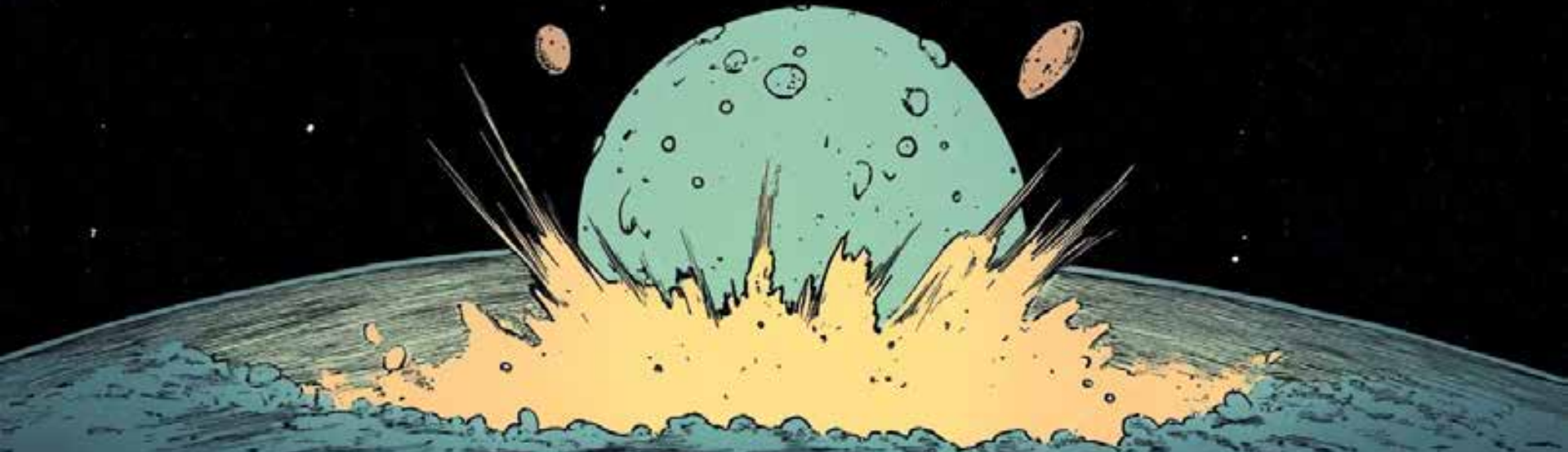


PLACENTAL MAMMALS

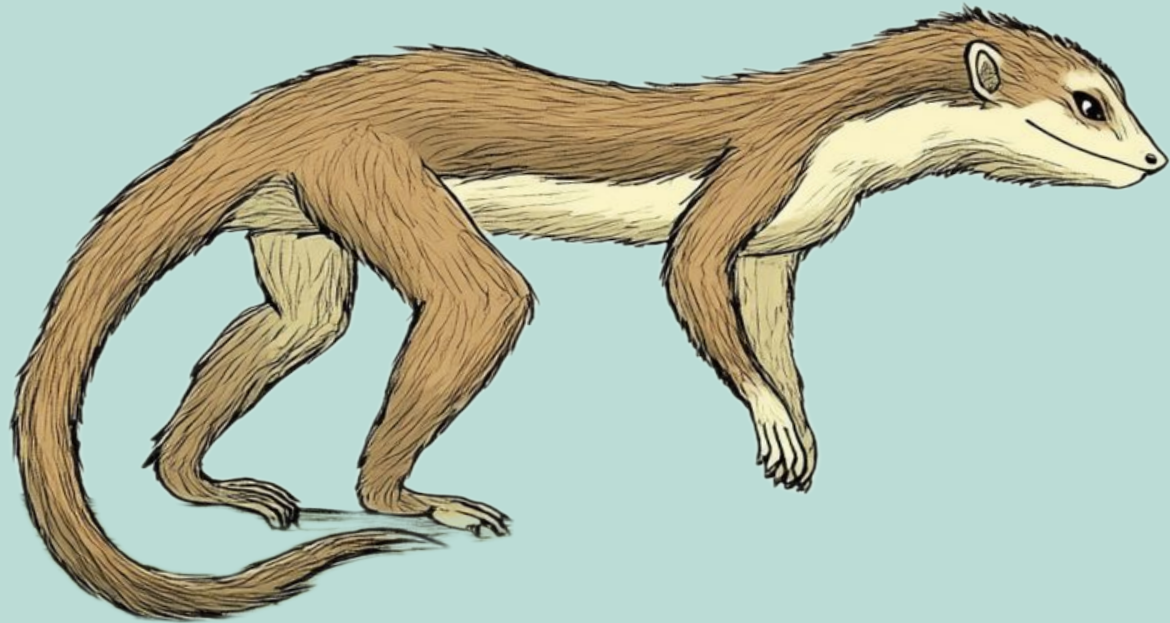
THE ANCESTORS OF PRIMATES

~100-65 MILLION YEARS AGO

66 MILLION YEARS AGO



KILLED 75% OF ALL SPECIES ON EARTH



I'M A SURVIVOR...



EARLY PRIMATES

THE FIRST HUMAN ANCESTORS
~60-20 MILLION YEARS AGO



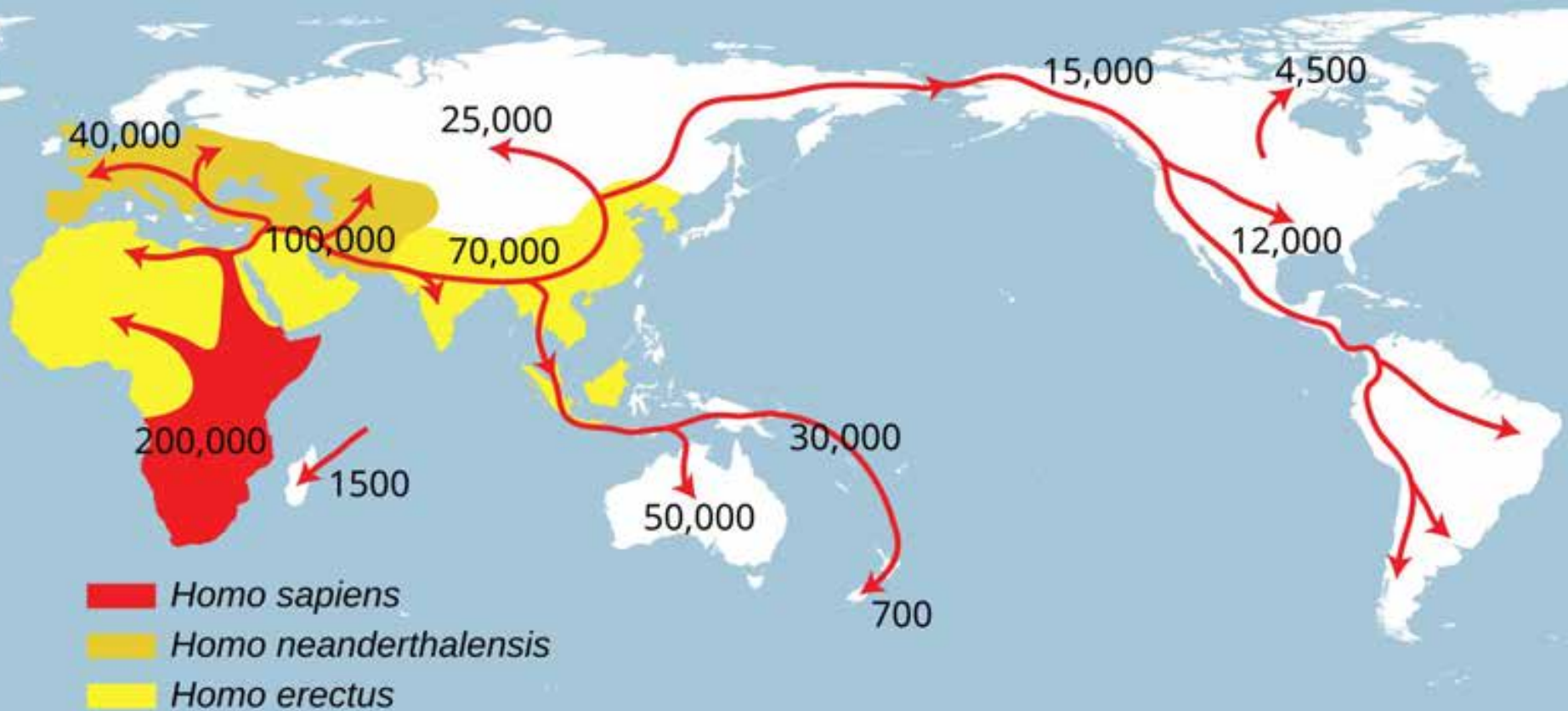
HOMININS

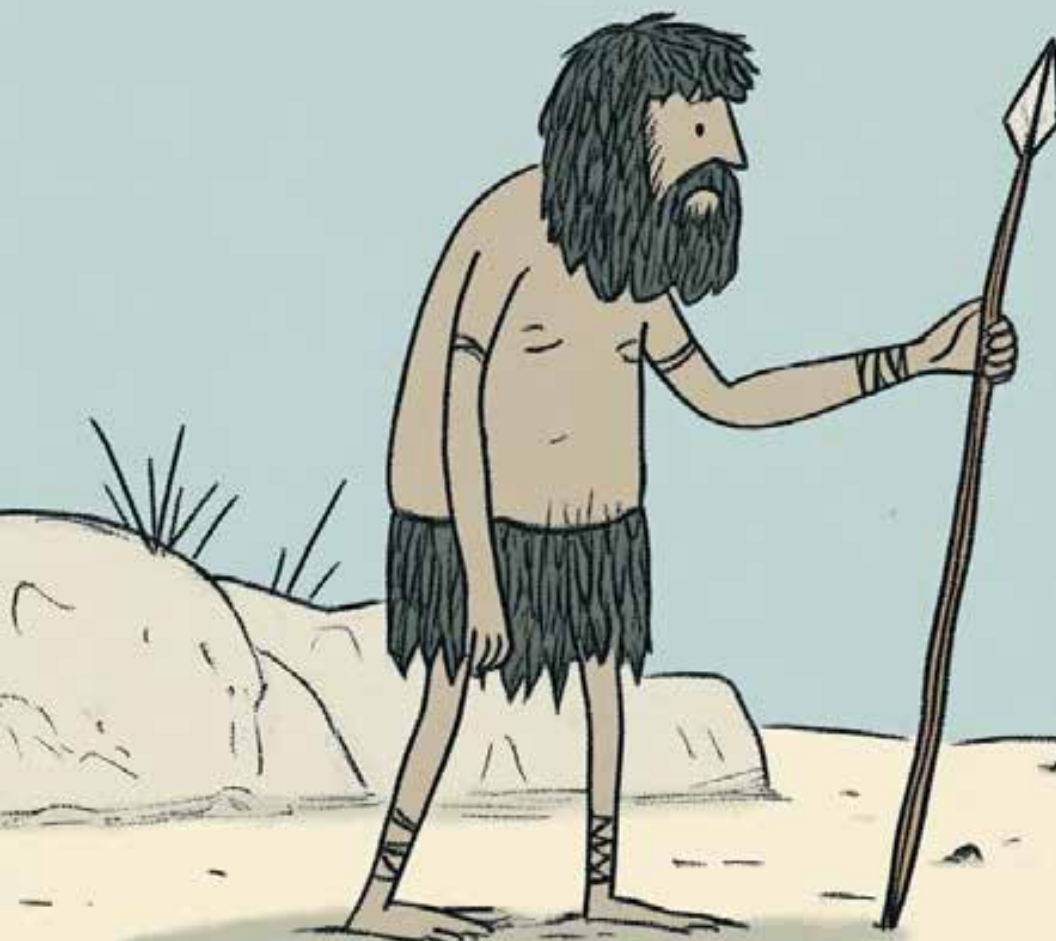
THE FIRST HUMAN ANCESTORS
~7-0.3 MILLION YEARS AGO



HOMO SAPIENS

MODERN HUMANS
~300,000 YEARS AGO - PRESENT





HUNT & GATHER...

~3.3 MILLION YEARS AGO – AROUND 10,000 BCE

COOL TOOL DUDE...



NO LAND OWNERSHIP

AGRICULTURAL REVOLUTION

~10,000 – 8,000 BCE

TRANSITIONAL PERIOD BETWEEN HUNTING-GATHERING AND AGRICULTURE.



PRIVATIZATION OF LAND BEGAN

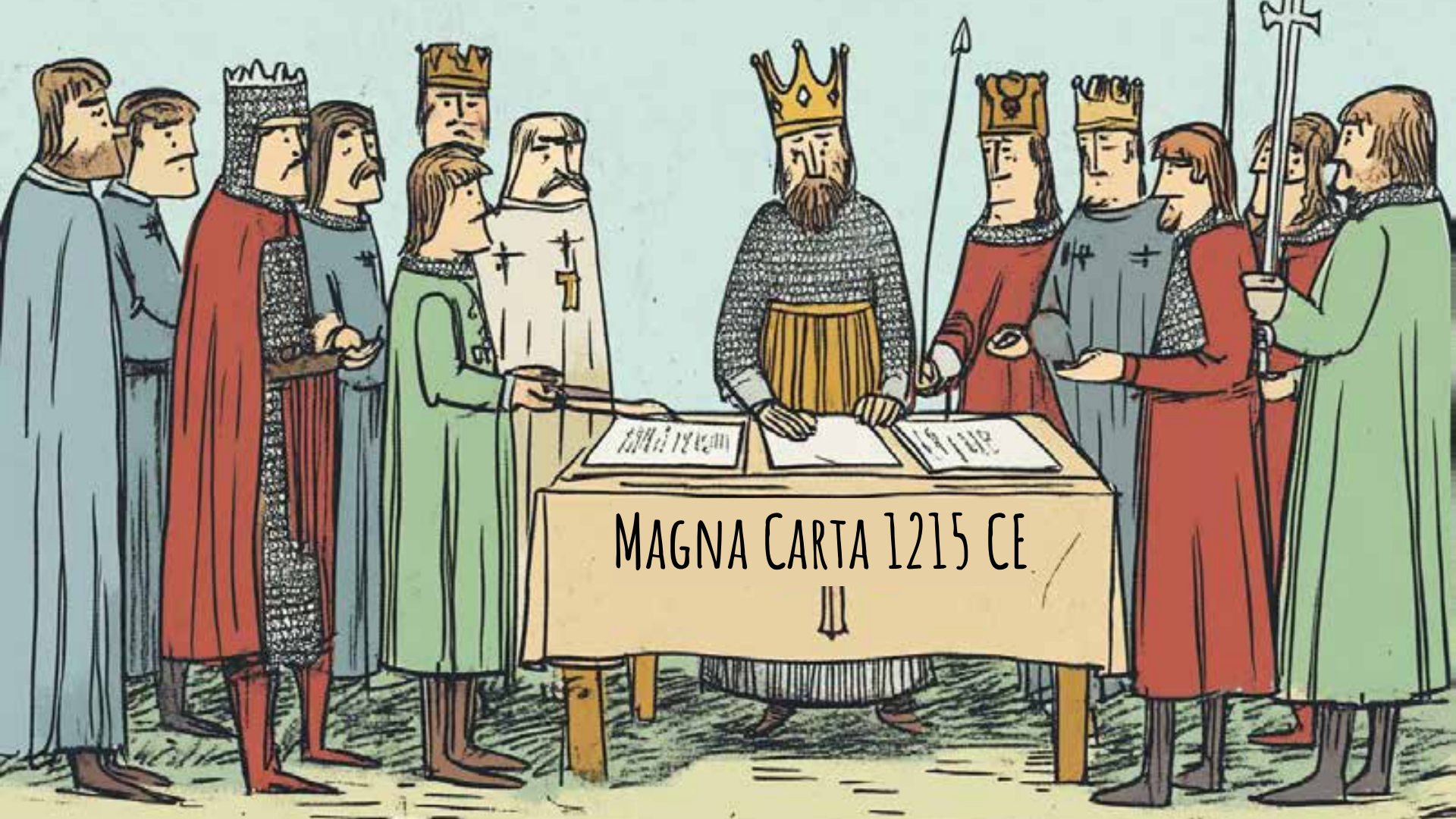
EARLY AGRICULTURAL SOCIETIES (E.G., MESOPOTAMIA) STARTED RECOGNIZING LAND AS AN ASSET.

EARLIEST DOCUMENTED LAND SALE ~2,600 BCE

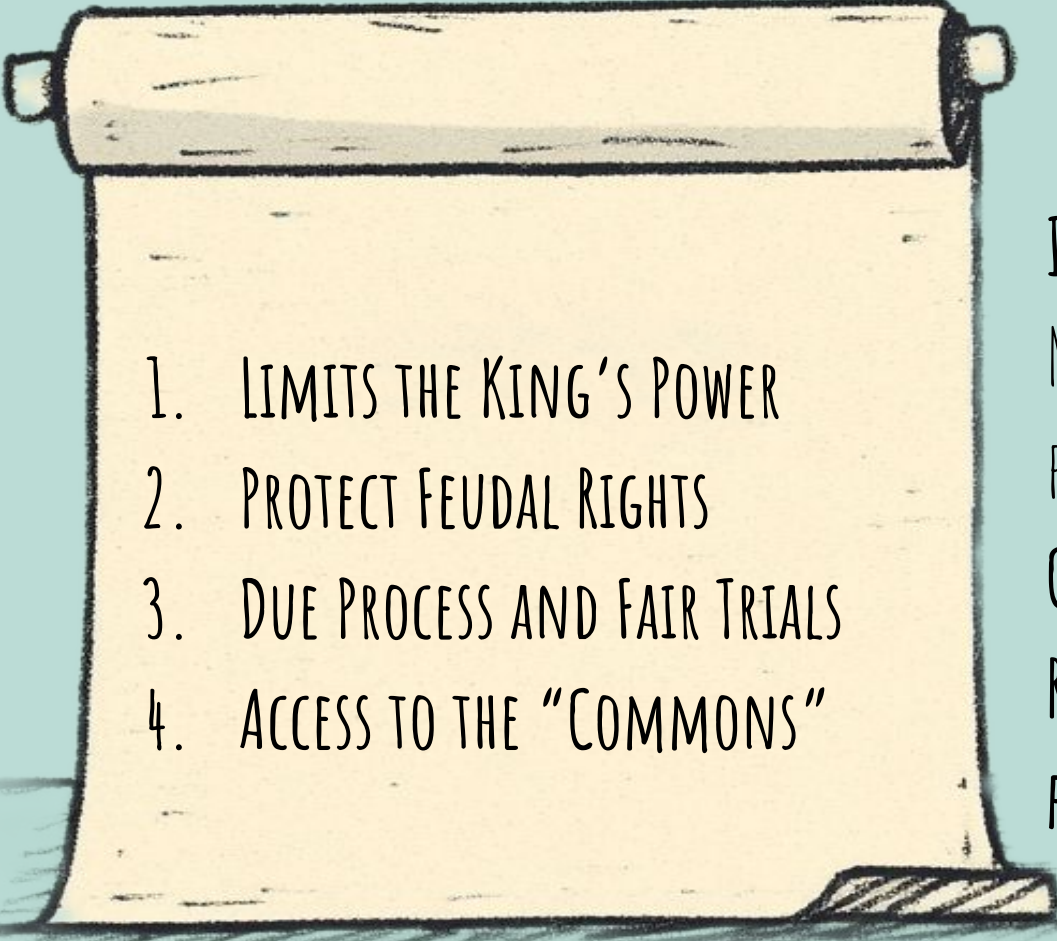


INCLUDED:

1. A HOUSE IN THE TOWN OF SHURUPPAK (MODERN-DAY IRAQ)
2. AN ENSLAVED MALE



MAGNA CARTA 1215 CE

- 
1. LIMITS THE KING'S POWER
 2. PROTECT FEUDAL RIGHTS
 3. DUE PROCESS AND FAIR TRIALS
 4. ACCESS TO THE "COMMONS"

INFLUENCE ON FUTURE LAWS :
MAGNA CARTA INSPIRED LATER LEGAL PRINCIPLES, INCLUDING THE U.S. CONSTITUTION, ENGLISH BILL OF RIGHTS (1689), AND HUMAN RIGHTS FRAMEWORKS.

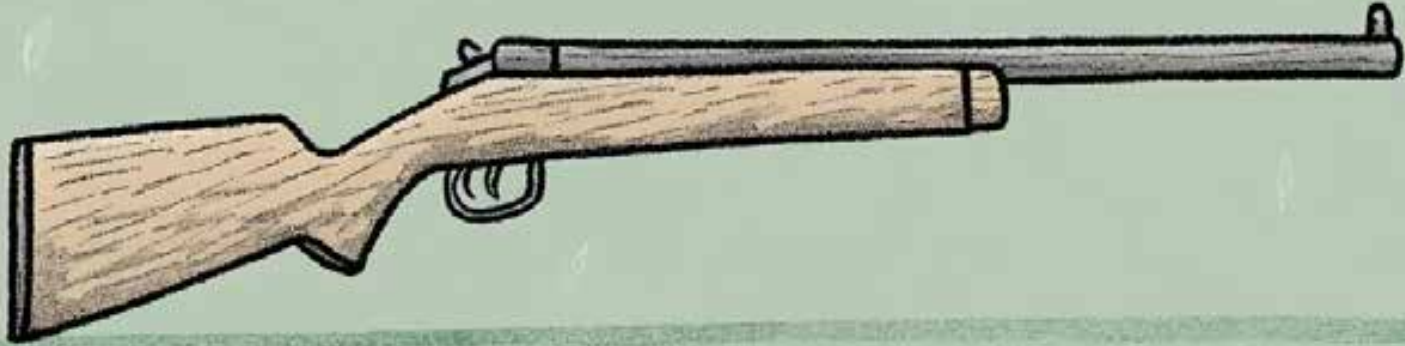
ENCLOSURE ACTS (1604-1914)



INDIGENOUS LAND THEFT AND GENOCIDE

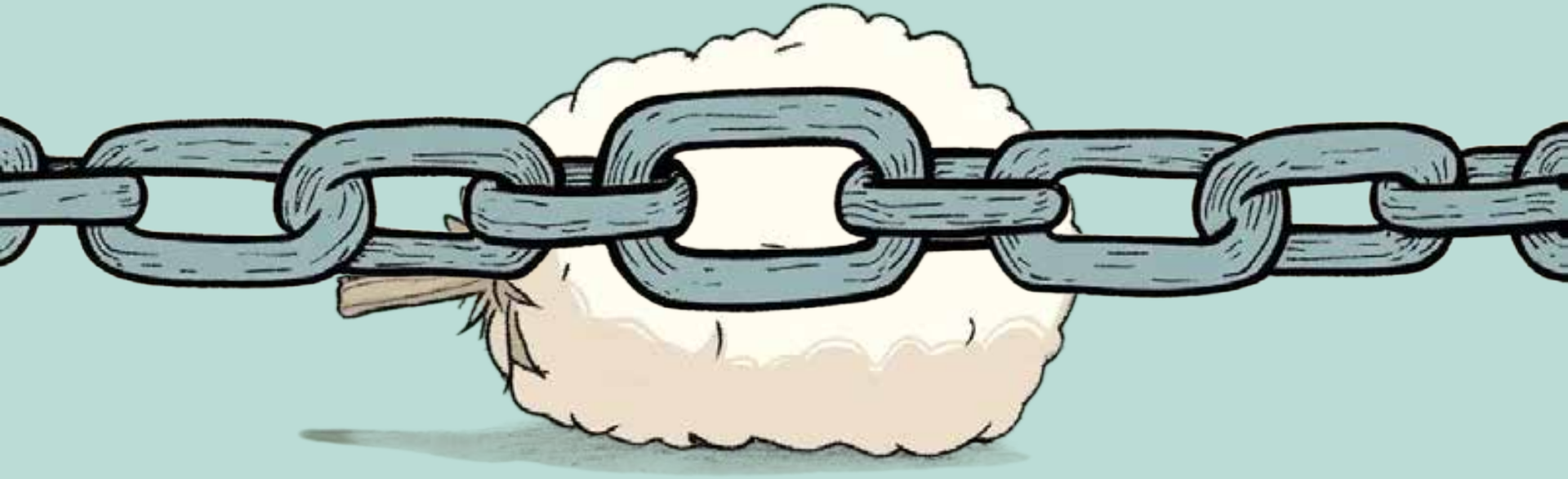
OCCUPIED INDIGENOUS LANDS KNOW TODAY AS AMERICA

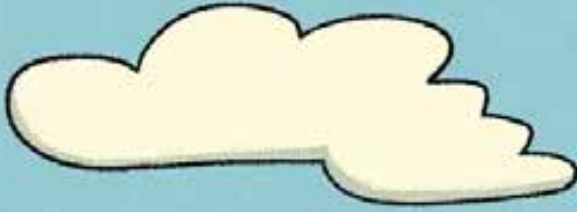
1492–1890 – PERIOD OF MOST VIOLENT GENOCIDE AND LAND THEFT.



*1890–PRESENT – ONGOING DISPOSSESSION, LEGAL BATTLES, AND RESISTANCE

SLAVERY AND RACIAL CAPITALISM (1619-1865)



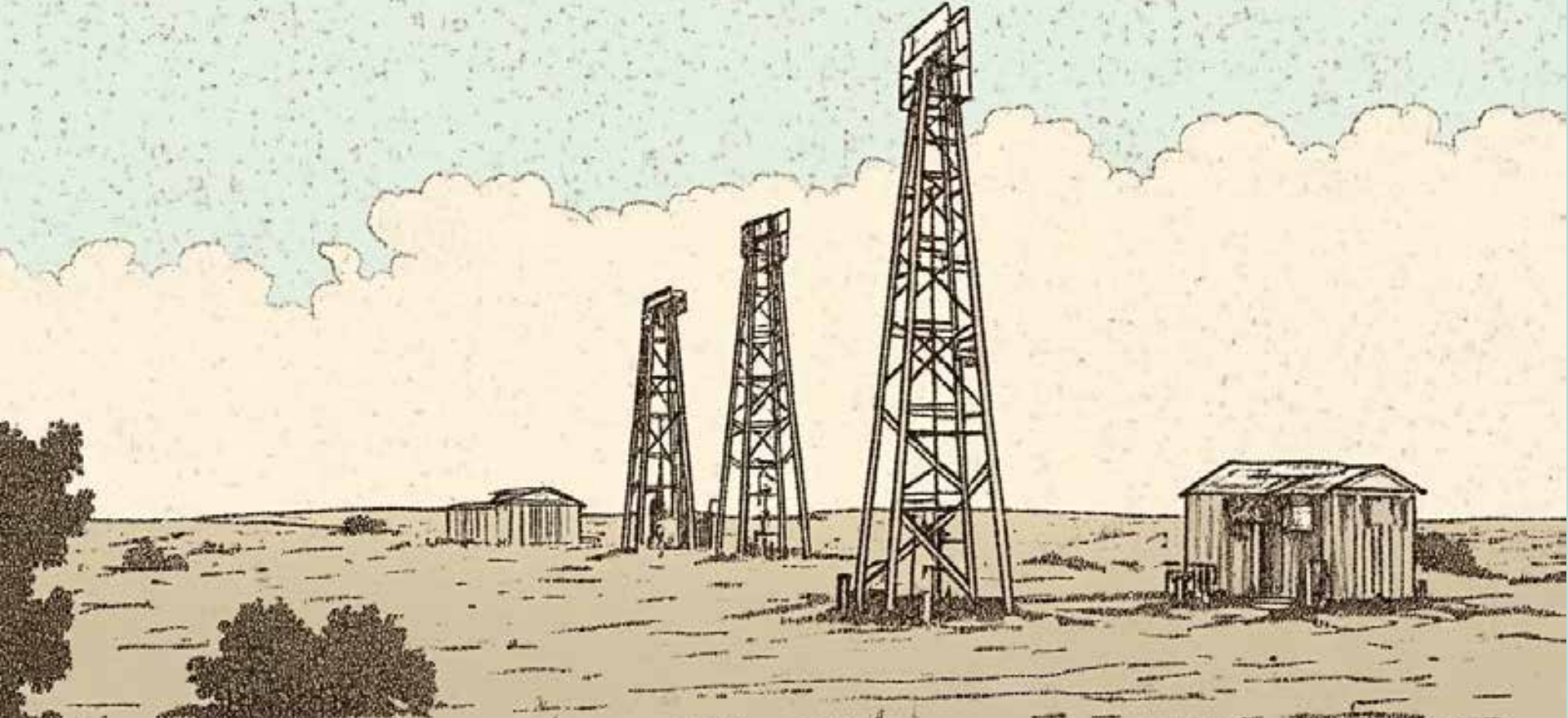


PACIFIC RAILROAD ACT OF 1862

THE GILDED AGE (1870S-1900S):



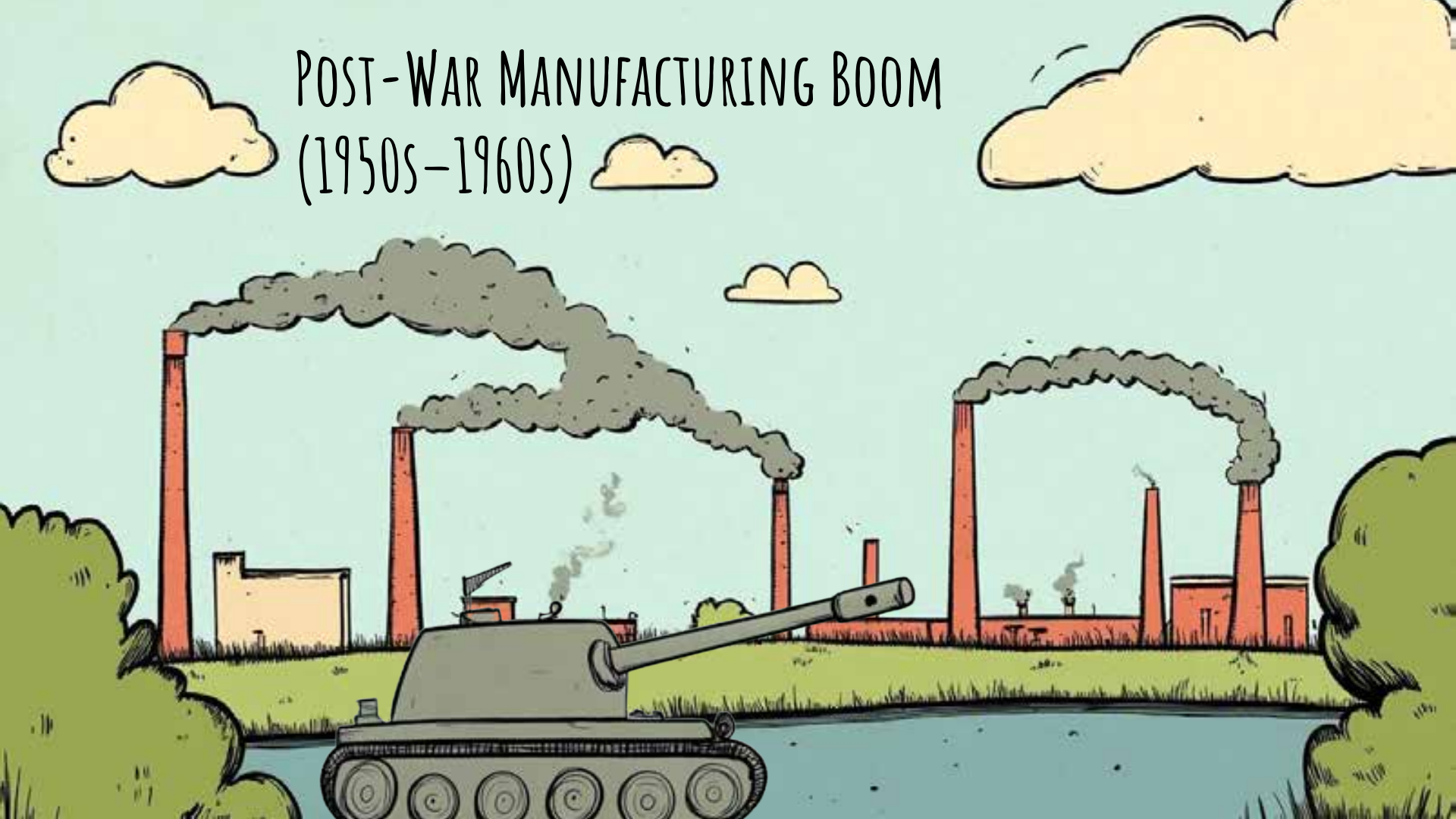
TEXAS OIL BOOM (1901-1940s)



JIM CROW, REDLINING, AND ECONOMIC APARTHEID (1877-1960s)



POST-WAR MANUFACTURING BOOM
(1950s-1960s)

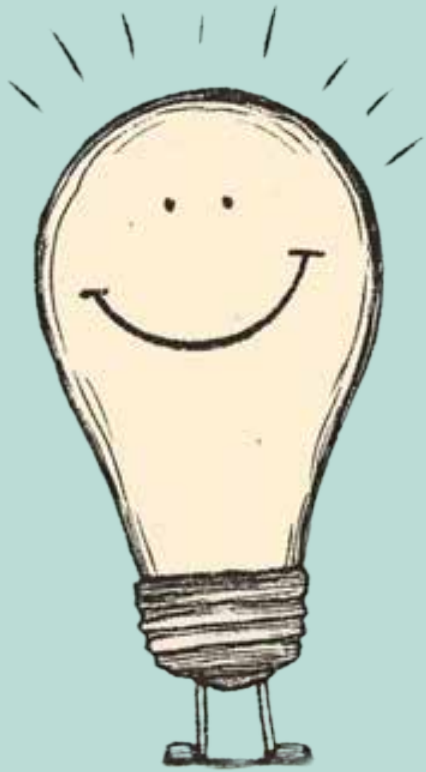




HOW SHOULD WE DO IT?

"TOGETHER"

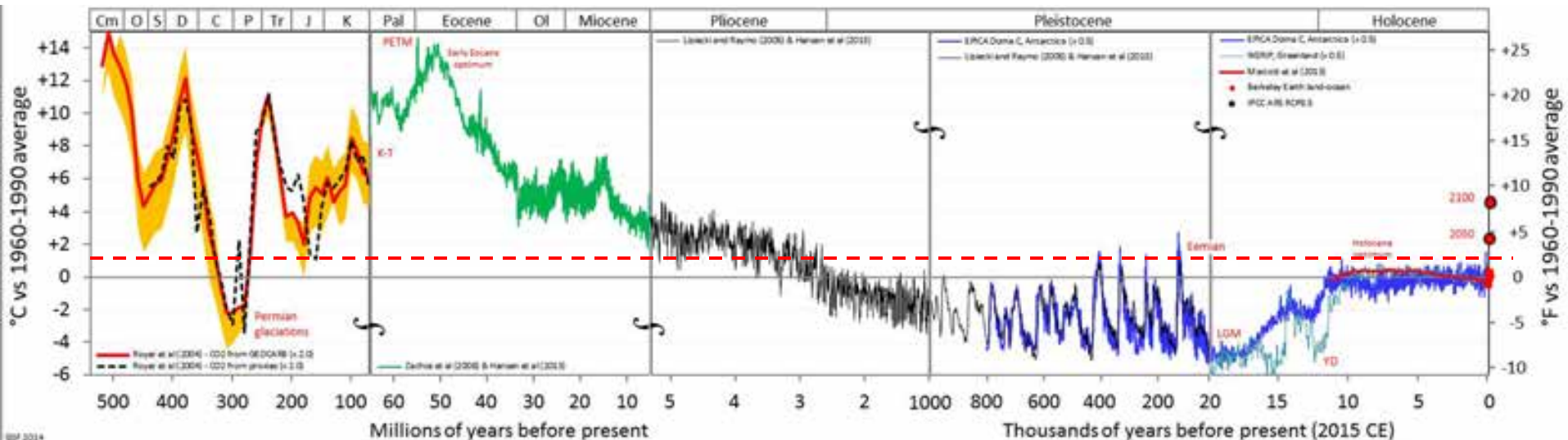




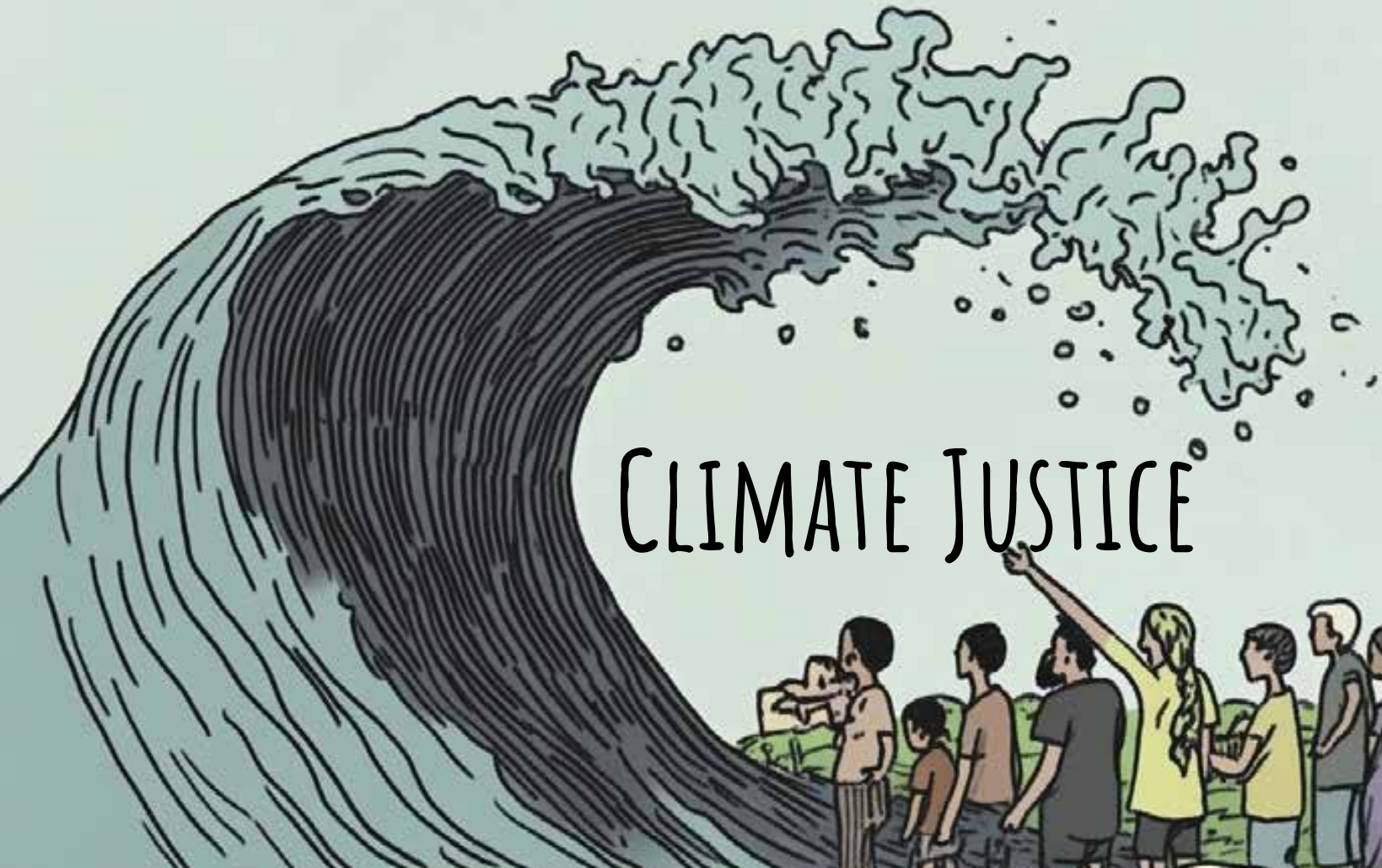
WHAT TO EXPECT...

- ~~1. STORY OF UNIVERSE~~
2. CLIMATE JUSTICE
3. SOLIDARITY ECONOMY EXPLAINED
4. MICRO-CASE STUDIES
5. INTERACTIVE ACTIVITY
6. Q&A

TEMPERATURE OF PLANET EARTH



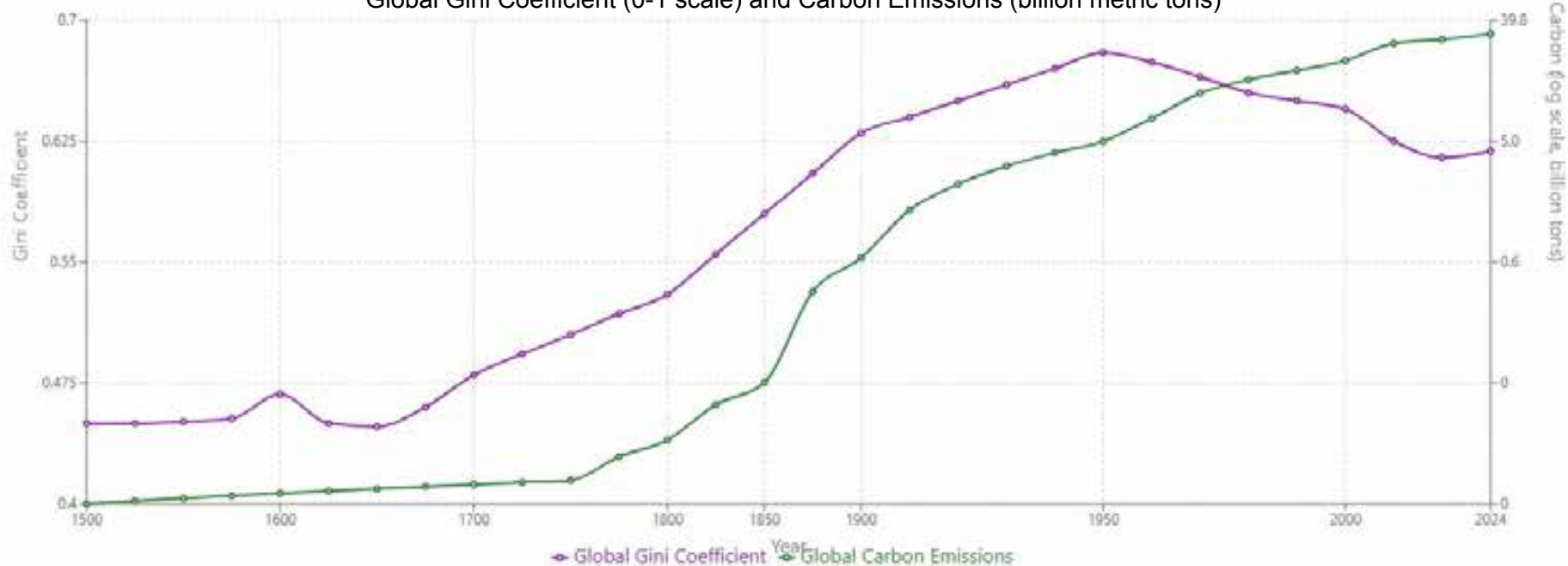
TODAY
1.28 °C
2.3 °F



CLIMATE JUSTICE

Global Inequality vs Carbon Emissions (1500-2024)

Global Gini Coefficient (0-1 scale) and Carbon Emissions (billion metric tons)



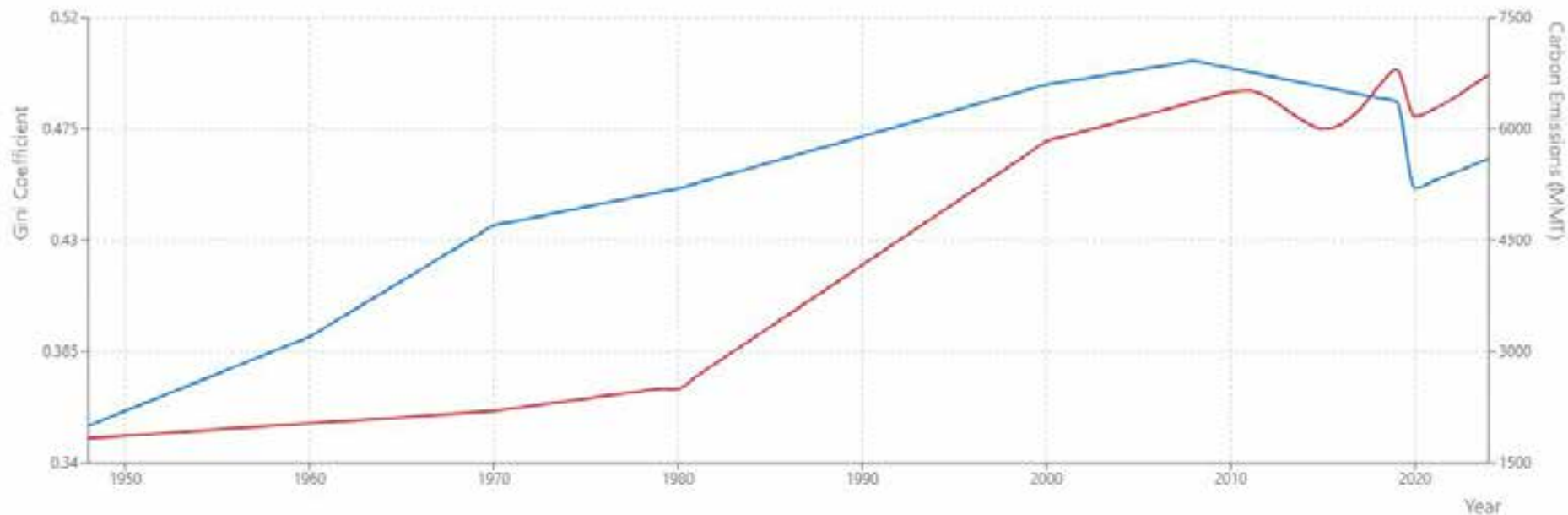
Key Historical Periods:

- Pre-industrial era (1500-1750): Low emissions, moderate inequality
- Industrial Revolution (1760-1900): Rising inequality as Western nations industrialized
- 20th Century (1900-2000): Peak inequality after WWII economic expansion
- Recent decades (2000-present): Declining inequality with rising emissions

Note: Visualization uses approximate historical data based on economic studies and records.

US Income Inequality vs Carbon Emissions (1948-2024)

Gini Coefficient (0-1 scale, higher values indicate greater inequality) and Carbon Emissions (million metric tons)



Note: This visualization uses approximate historical data based on trends.

◆ Gini Coefficient ◆ Carbon Emissions

Sources: Income inequality data approximated from U.S. Census Bureau and World Inequality Database. Carbon emissions data approximated from EPA and Global Carbon Project.



YOU DON'T BELONG HERE.

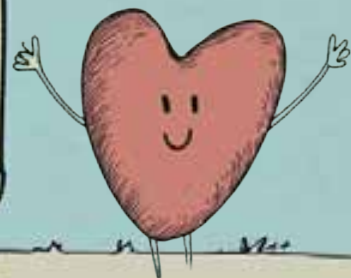


CO Everything

COOPERATIVE
COMMUNITY
COLLABORATION
COMMONS

FOR

ALL THE
THINGS
PEOPLE NEED



WHEN SHOULD WE DO IT??



"TONGUEWHER"

CO Everything

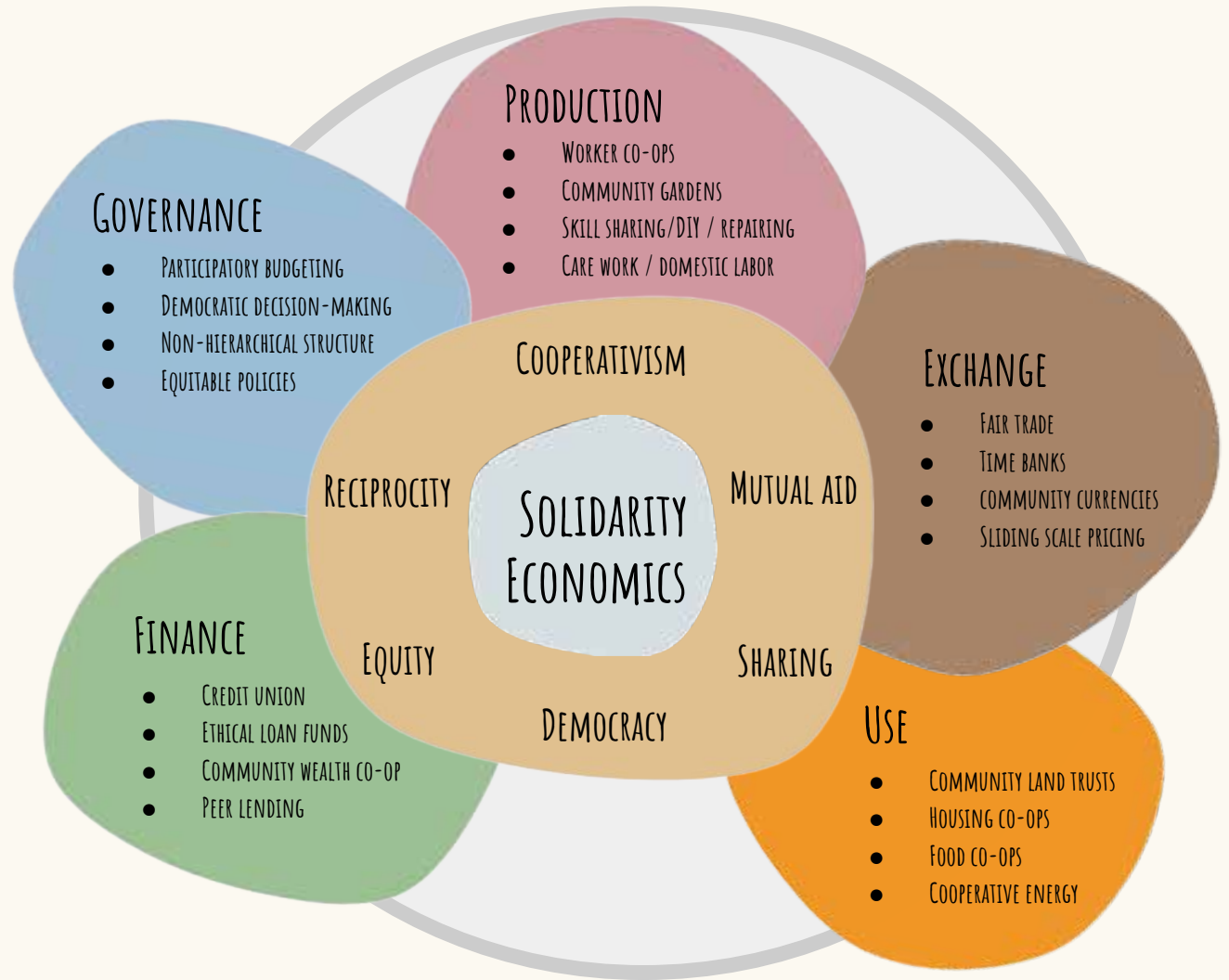




SOLIDARITY ECONOMY

SOLIDARITY

ECONOMY



MANFRED MAX-NEEF'S HUMAN-SCALE DEVELOPMENT

HUMAN-SCALE DEVELOPMENT PRIORITIZES PEOPLE OVER PROFITS, RECOGNIZING THAT ALL HUMAN NEEDS—SUBSISTENCE, AFFECTION, FREEDOM, AND CREATIVITY—ARE INTERCONNECTED AND MUST BE MET TOGETHER FOR TRUE WELL-BEING. .

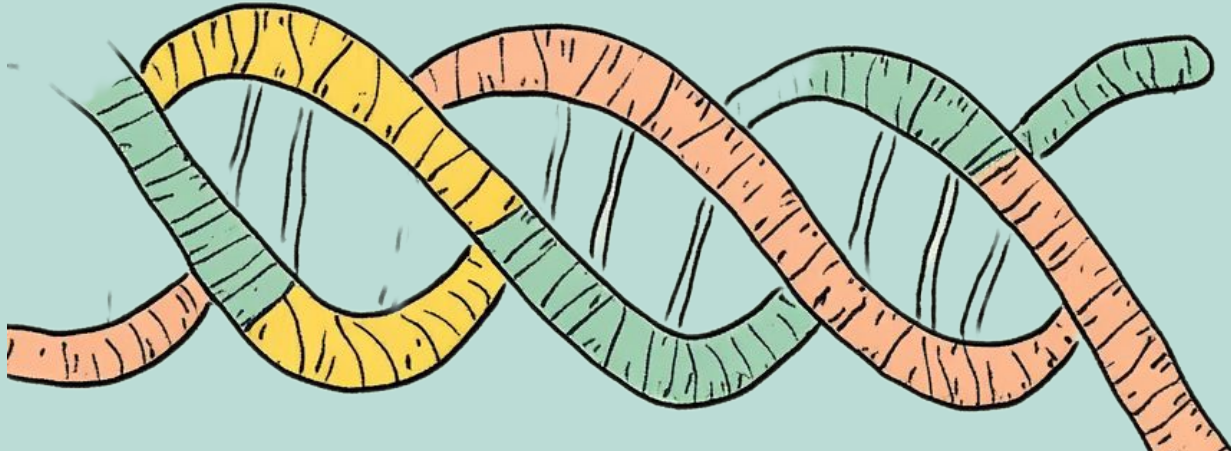
THE KEY CATEGORIES OF NEEDS ARE:

- SUBSISTENCE – PHYSICAL AND MENTAL WELL-BEING (FOOD, SHELTER, HEALTH, WORK)
- PROTECTION – SAFETY, SOCIAL SECURITY, RIGHTS, AND SYSTEMS OF CARE
- AFFECTION – RELATIONSHIPS, FAMILY, AND COMMUNITY BONDS
- UNDERSTANDING – EDUCATION, CRITICAL THINKING, AND ACCESS TO KNOWLEDGE
- PARTICIPATION – ENGAGEMENT IN DECISION-MAKING AND SOCIETAL PROCESSES
- LEISURE – PLAY, REST, AND CREATIVE EXPRESSION
- CREATION – INNOVATION, SKILLS, AND SELF-EXPRESSION
- IDENTITY – CULTURAL ROOTS, SENSE OF BELONGING, AND SELF-ESTEEM
- FREEDOM – AUTONOMY, CHOICE, AND SELF-DETERMINATION



$$D = N - A$$

- D = DEVELOPMENT (THE QUALITY OF LIFE IN A SOCIETY)
- N = SATISFACTION OF FUNDAMENTAL HUMAN NEEDS
- A = DESTRUCTION OF LIFE-SUSTAINING ASSETS (NATURAL, SOCIAL, HUMAN, CULTURAL CAPITAL, ETC.)



"HOW CAN WE USE WHAT WE HAVE—MONEY, TIME, SKILLS, RELATIONSHIPS, PRIVILEGE, ETC.—TO HELP CREATE THE GREATEST NET-POSITIVE IMPACT?"

THE PHYSICAL RESULT OF OUR WORK MIGHT BE A HOUSE,
COMMUNITY SPACE, SOLAR ARRAY, OR URBAN GARDEN—MEETING
A BASIC NEED FOR SHELTER, ENERGY, OR FOOD (**SUBSISTENCE**). BUT
THE PROCESS OF WORKING ON IT TOGETHER IN COMMUNITY
(**PARTICIPATION**) STRENGTHENS SOCIAL BONDS (**AFFECTION**),
DEEPENS SHARED KNOWLEDGE (**UNDERSTANDING**), AND
EMPOWERS PEOPLE WITH GREATER AUTONOMY (**FREEDOM**).



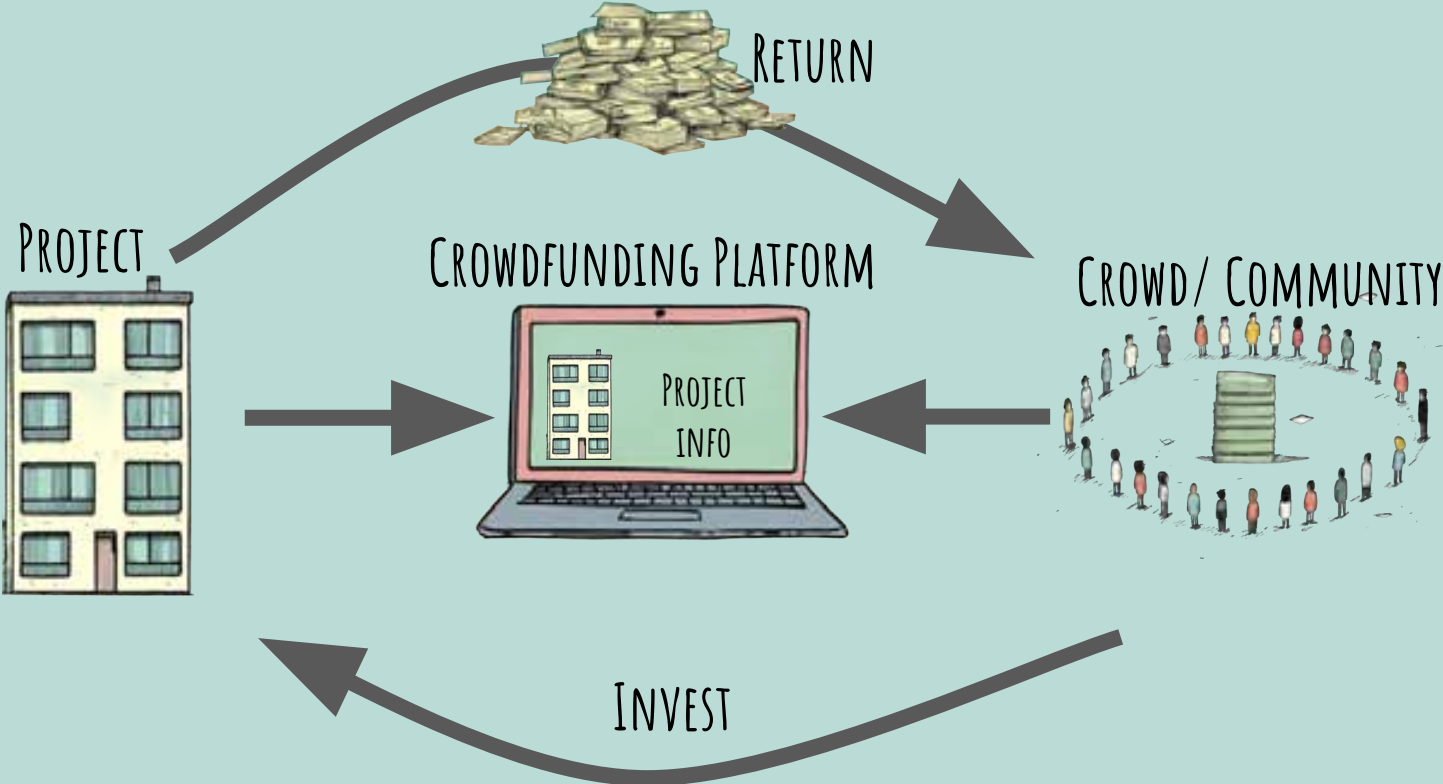
HOW SHOULD WE DO IT?

"TOGETHER"

MICRO-CASE STUDIES

- CROWDFUNDING
- PARTICIPATORY DESIGN
- COMMUNITY COMMITTEE
- CO-LIVING
- COMMUNITY LAND TRUST
- FOOD COOP
- SOLAR COOP
- COMMUNITY INVESTMENT FUND
- COOPERATIVE INCUBATOR
- CULTURAL EQUITY INCUBATOR

CROWDFUNDING



1463 DOT AVE.

- INCOME RESTRICTED MICRO UNIT RENTALS
- COMMERCIAL SPACE

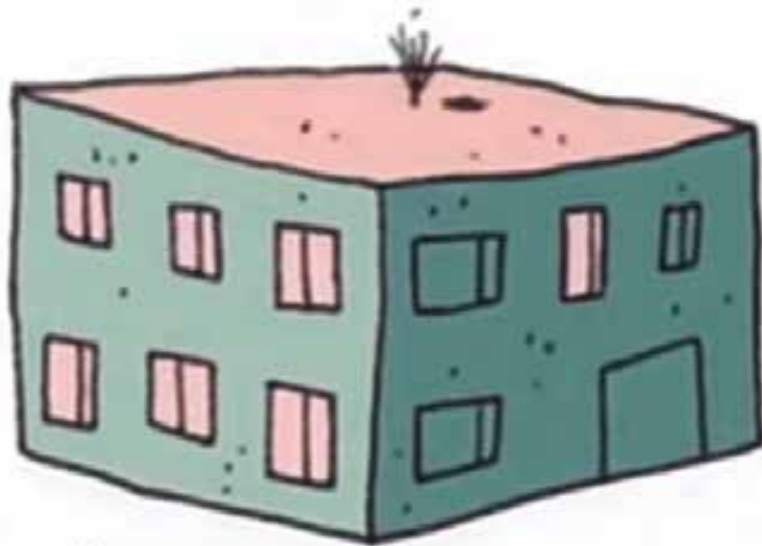


Just Book-ish



CLT

BOSTON NEIGHBORHOOD
COMMUNITY LAND TRUST



RESIDENT
OWNERSHIP

99 YEAR GROUND LEASE



COMMUNITY OWNERSHIP OF LAND



BOSTON
UJIMA
PROJECT





BOSTON FARMS





Locally
Local G
Grown
Community



Boston



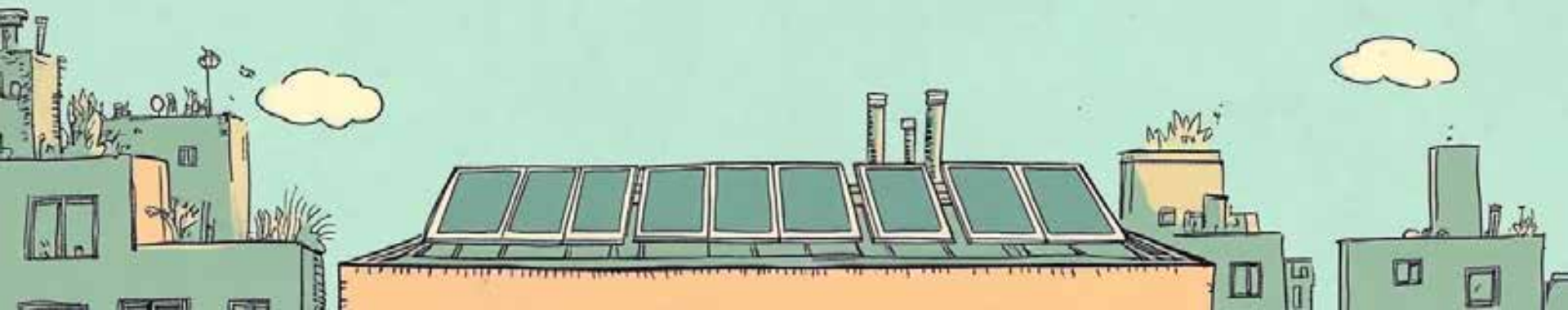
Community



Solar



Cooperative



SOLIDARITY HEADQUARTERS

CO-WORKING

COOP INCUBATOR

DAYCARE COOP





cultural equity
incubator

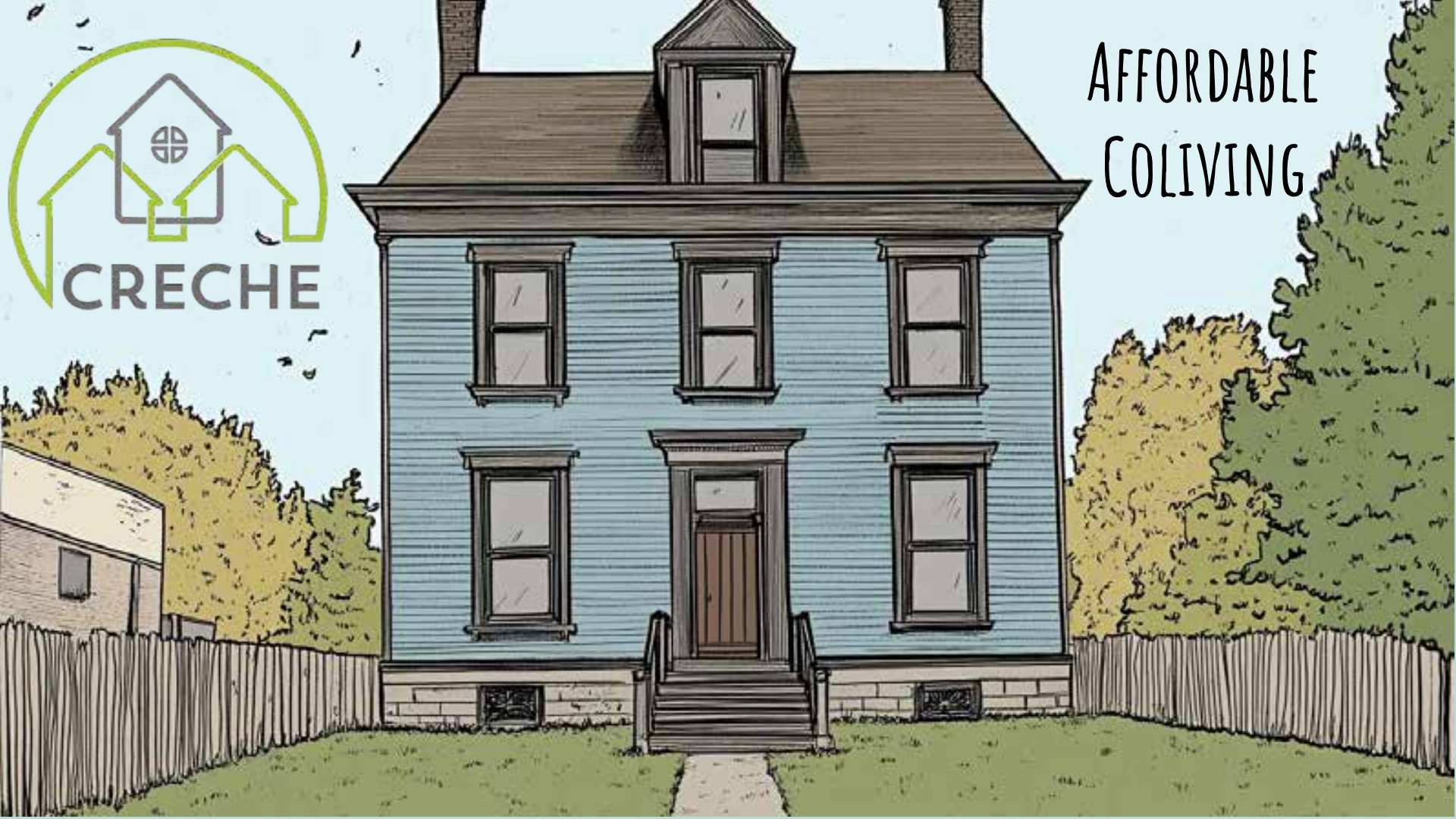
SHARED ARTIST SPACE

PURCHASING BUILDING FROM A COOP!

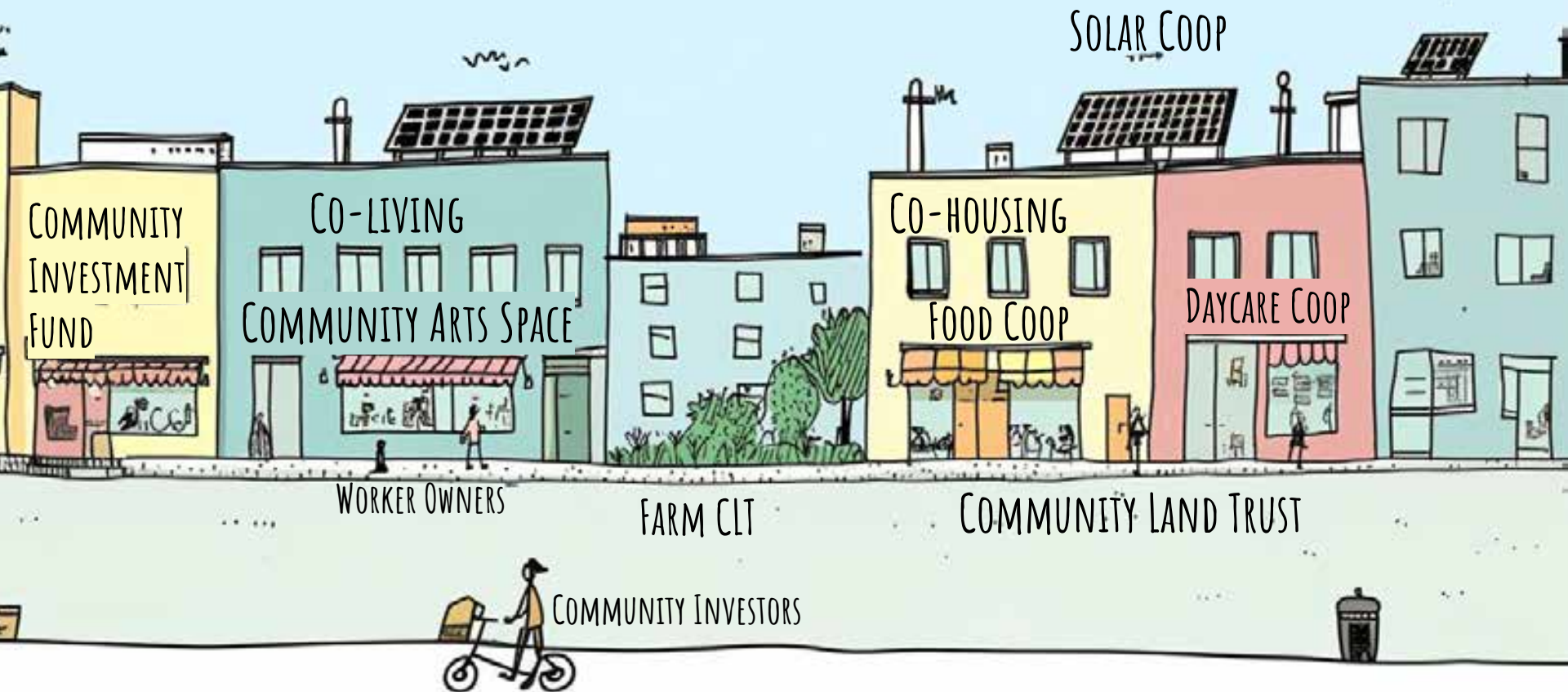




AFFORDABLE
COLIVING



SOLIDARITY ECONOMY



COMMUNITY
INVESTMENT
FUND

CO-LIVING

COMMUNITY ARTS SPACE

WORKER OWNERS

FARM CLT

CO-HOUSING

FOOD COOP

SOLAR COOP

DAYCARE COOP

COMMUNITY LAND TRUST

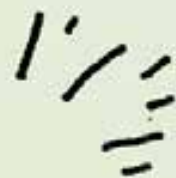
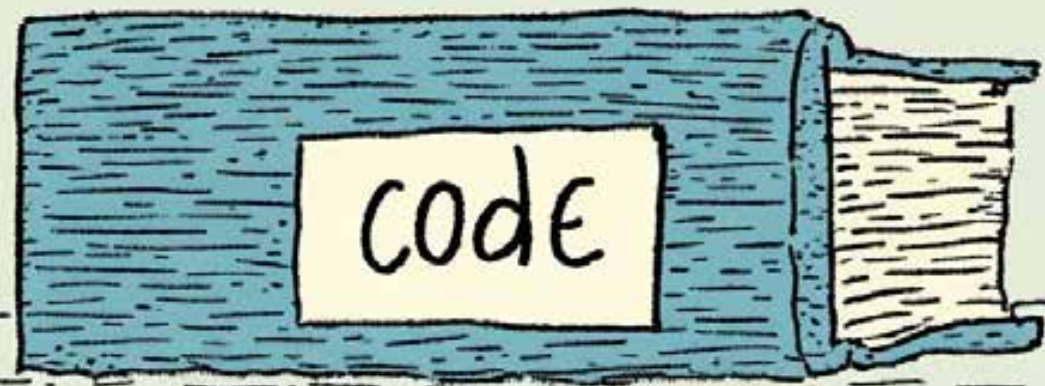
COMMUNITY INVESTORS

NO SILVER BULLET





COMPLICATED





HOW SHOULD WE DO IT?

"TOGETHER"

TOWARD JUSTICE

THANKS!

JustBook-ish



-  **Boston**
-  **Community**
-  **Solar**
-  **Cooperative**



**TLeo
Development**



AND SO MANY MORE!

THE END



SOLIDARITY EXERCISE

- (5 MIN) TALK TO YOUR NEIGHBOR
 - WHAT'S ONE IDEA FROM THIS PRESENTATION THAT RESONATED WITH YOU?
 - WHAT IS ONE SMALL ACTION YOU CAN TAKE RIGHT NOW TO BE IN SOLIDARITY WITH OTHERS?
- (5 MIN) TAKE THAT STEP



SOME EXAMPLE IDEAS...

- KEEP TALKING TO YOU NEIGHBOR...
- REACH OUT TO ONE PERSON WHO MIGHT BE INTERESTED IN COLLABORATING ON A SOLIDARITY-BASED PROJECT.
- THANK SOMEONE WHOSE WORK OFTEN GOES UNNOTICED.
- FIND AND BOOKMARK A RESOURCE ON THE SOLIDARITY ECONOMY.
- LOOK UP LOCAL COOPERATIVES OR COMMUNITY LAND TRUSTS TO CONNECT WITH.
- SEARCH FOR SUPPLIERS, CONSULTANTS, OR CONTRACTORS NEAR YOU WHO ARE OWNED BY PEOPLE OF COLOR.
- WRITE A QUICK NOTE ON HOW THIS PRESENTATION MADE YOU FEEL—POSITIVE OR CRITICAL THOUGHTS INCLUDED.

EVERY STEP COUNTS...