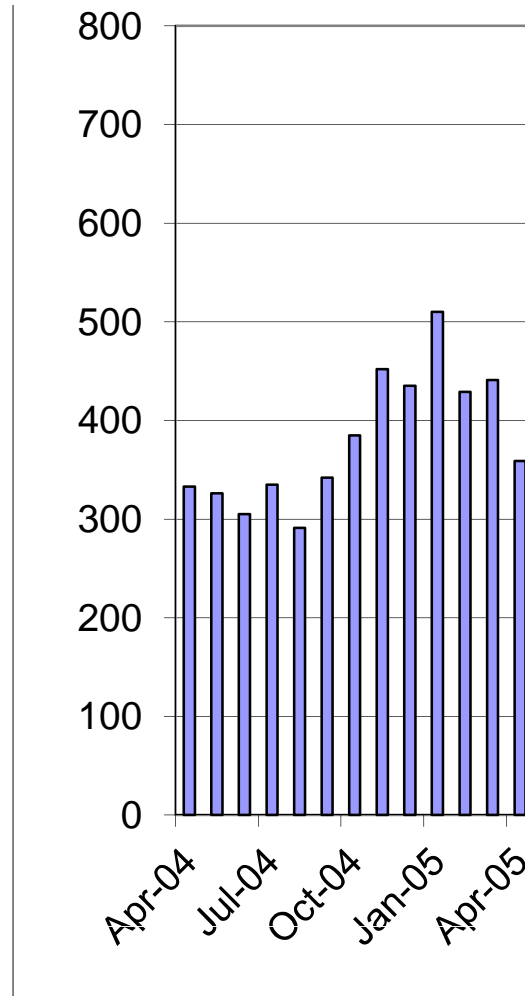


from	to	month of	kwh	yr total	year
11/1/2001	1/2/2002				is this really 2 months???
1/3/2002	2/3/2002	January-02	599		
2/4/2002	3/5/2002	February-02	513		
3/6/2002	4/2/2002	March-02	489		
4/3/2002	5/5/2002	April-02	453		
5/6/2002	6/3/2002	May-02	459		
6/4/2002	7/2/2002	June-02	408		
7/3/2002	8/2/2002	July-02	396		
8/4/2002	9/1/2002	August-02	413		
9/2/2002	10/1/2002	September-02	441		
10/2/2002	10/31/2002	October-02	486		
11/1/2002	12/2/2002	November-02	585.5		
12/3/2002	1/2/2003	December-02	585.5	5828	
1/3/2003	2/3/2003	January-03	597		
2/4/2003	3/5/2003	February-03	522		
3/6/2003	4/2/2003	March-03	456		
4/3/2003	5/5/2003	April-03	479		
5/6/2003	6/3/2003	May-03	419		
6/4/2003	7/2/2003	June-03	454		
7/3/2003	8/2/2003	July-03	336		
8/4/2003	9/1/2003	August-03	325		
9/2/2003	10/1/2003	September-03	293		
10/2/2003	10/31/2003	October-03	328		
11/1/2003	12/1/2003	November-03	423		
12/2/2003	1/2/2004	December-03	514	5146	
1/3/2004	2/3/2004	January-04	401		
2/4/2004	3/5/2004	February-04	411		
3/6/2004	4/2/2004	March-04	360		
4/3/2004	5/5/2004	April-04	333		
5/6/2004	6/3/2004	May-04	326		
6/4/2004	7/2/2004	June-04	305		
7/3/2004	8/3/2004	July-04	335		
8/4/2004	9/1/2004	August-04	291		
9/2/2004	10/1/2004	September-04	342		
10/2/2004	10/30/2004	October-04	385		
10/31/2004	12/1/2004	November-04	452		
12/2/2004	12/30/2004	December-04	435	4376	
12/31/2004	2/1/2005	January-05	510		
2/2/2005	3/3/2005	February-05	429		
3/4/2005	4/4/2005	March-05	441		
4/5/2005	5/3/2005	April-05	359		
5/4/2005	6/2/2005	May-05	352		
6/3/2005	7/1/2005	June-05	385		
7/2/2005	8/3/2005	July-05	400		
8/4/2005	9/1/2005	August-05	360		
9/2/2005	10/1/2005	September-05	410		
10/2/2005	10/30/2005	October-05	450		
10/31/2005	12/1/2005	November-05	500		
12/2/2005	12/31/2005	December-05	737	5333	2005

1/1/2006	2/1/2006	January-06	525	
2/2/2006	3/4/2006	February-06	296	
3/5/2006	4/1/2006	March-06	284	
4/2/2006	5/3/2006	April-06	300	
5/4/2006	6/1/2006	May-06	233	
6/2/2006	6/30/2006	June-06	222	
7/1/2006	8/1/2006	July-06	232	
8/2/2006	9/1/2006	August-06	253	
9/2/2006	10/2/2006	September-06	284	
10/3/2006	10/30/2006	October-06	262	
10/31/2006	11/30/2006	November-06	370	
12/1/2006	12/29/2006	December-06	372	3633 2006
12/30/2006	1/29/2007	January-07	353	
1/30/2007	3/2/2007	February-07	365	
3/2/2007	4/2/2007	March-07	284	
4/2/2007	5/1/2007	April-07	245	
5/1/2007	5/31/2007	May-07	252	
5/31/2007	6/30/2007	June-07	248	
6/30/2007	8/1/2007	July-07	237	
8/1/2007	8/29/2007	August-07	234	
8/29/2007	10/1/2007	September-07	408	
10/1/2007	10/29/2007	October-07	279	
10/30/2007	11/29/2007	November-07	338	
11/29/2007	12/31/2007	December-07	393	3636 2007
1/1/2008	1/29/2008	January-08	370	
1/30/2008	2/28/2008	February-08	389	
2/29/2008	3/28/2008	March-08	313	
3/29/2008	4/29/2008	April-08	422	
4/30/2008	5/28/2008	May-08	305	
5/29/2008	6/30/2008	June-08	298	
7/1/2008	8/1/2008	July-08	287	
8/2/2008	8/29/2008	August-08	320	
8/30/2008	10/1/2008	September-08	326	
10/2/2008	10/29/2008	October-08	348	
10/30/2008	11/29/2008	November-08	298	
11/30/2008	12/31/2008	December-08	410	4086 2008
12/26/2008	1/27/2009	January-09	470	
1/27/2009	2/26/2009	February-09	362	
2/26/2009	3/27/2009	March-09	333	
3/27/2009	4/28/2009	April-09	301	
4/28/2009	5/29/2009	May-09	305	
5/30/2009	6/30/2009	June-09	289	
7/1/2009	7/31/2009	July-09		
		August-09		
		September-09		
		October-09		
		November-09		
		December-09		2060 2009
		January-10		
		February-10		



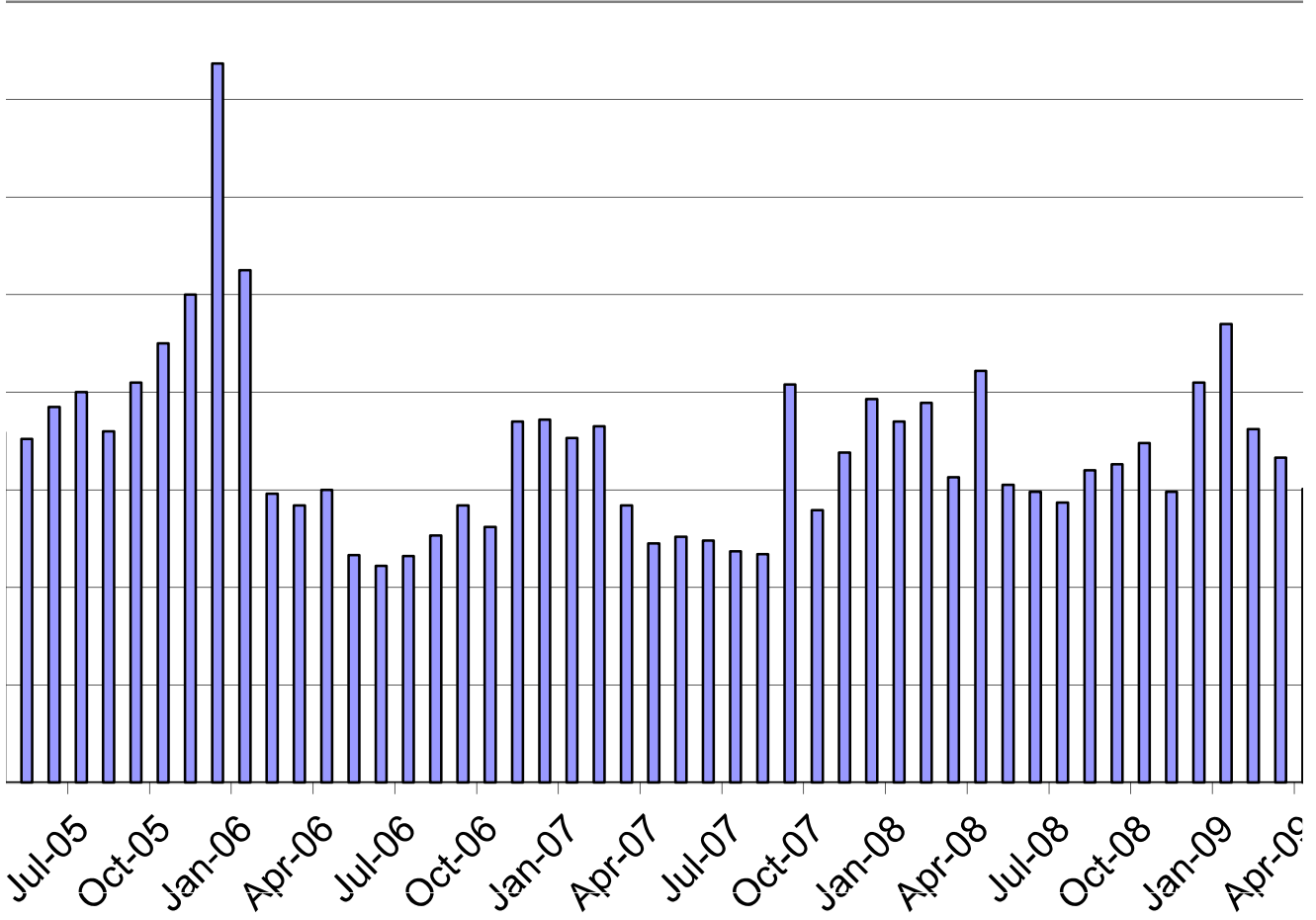
purchased  
post-PV:  
13,415

March-10  
April-10  
May-10  
June-10  
July-10  
August-10  
September-10  
October-10  
November-10  
December-10

0 2010

---

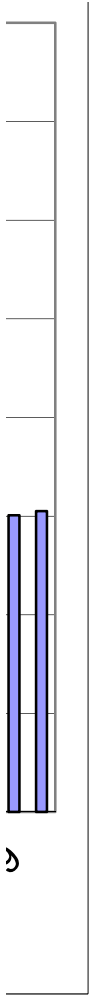
**KWh Purchased from PG&E**





—

└



2